

# TASMANIAN STATISTICAL INDICATORS

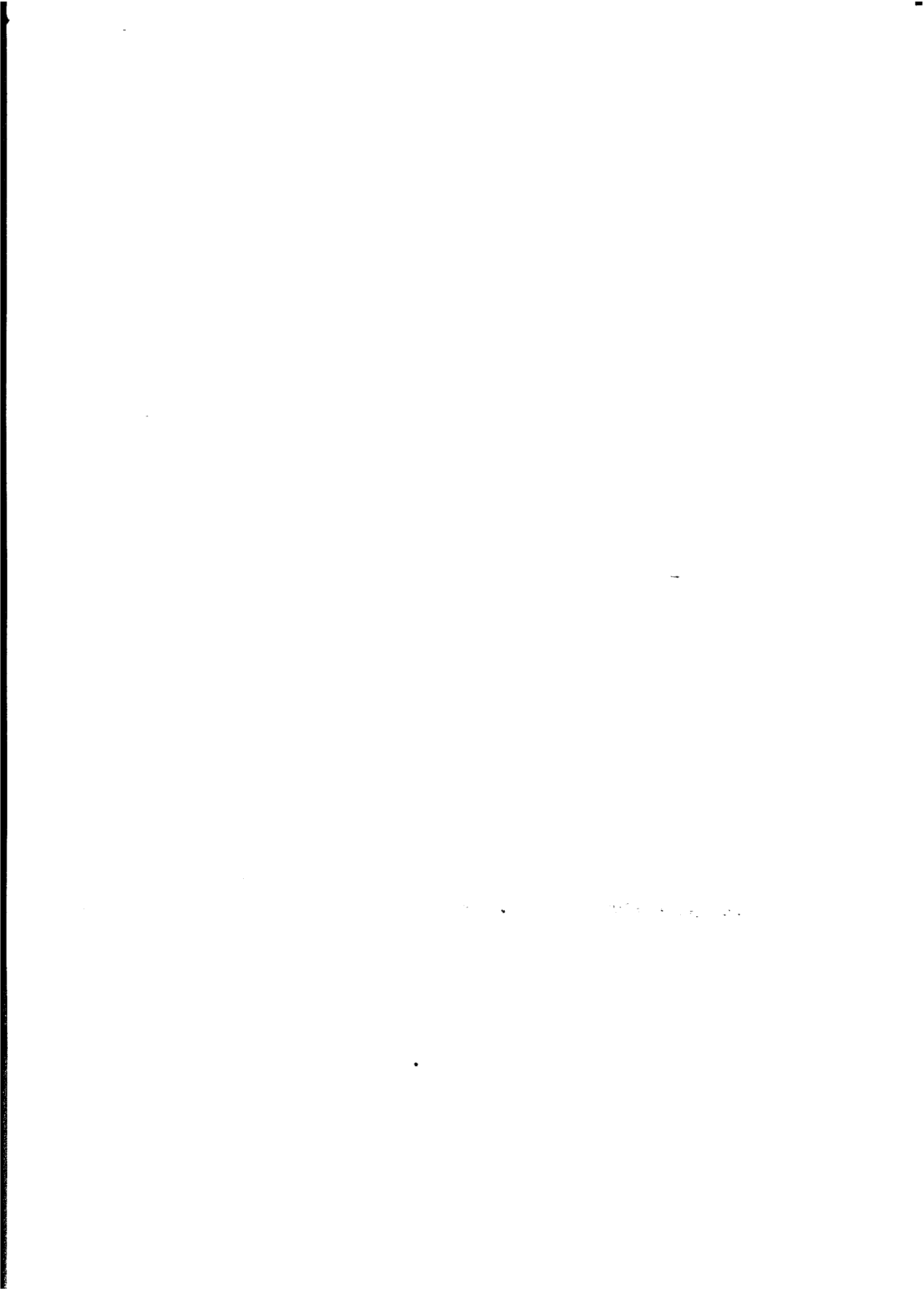
EMBARGO: 11:30AM (CANBERRA TIME) MON 11 MAY 1998

## CONTENTS

	<i>page</i>
COMMENTARY .....	v
 SUBJECT AREAS	
1 Population and demography .....	1
2 Labour force .....	2
3 Wages and prices .....	10
4 Production .....	15
5 Primary industry .....	16
6 Building .....	20
7 Finance .....	21
8 Tourism .....	22
9 Transport .....	24
10 Retail trade .....	24
11 Australia and State comparisons .....	25
12 Tasmanian Statistical Divisions, comparisons .....	26
 ADDITIONAL INFORMATION	
Explanatory notes .....	27
Map: Tasmanian Statistical Divisions .....	28

## INQUIRIES

- For more information about these and related statistics, contact Information Services on 03 6222 5800 or refer to the back cover of this publication.

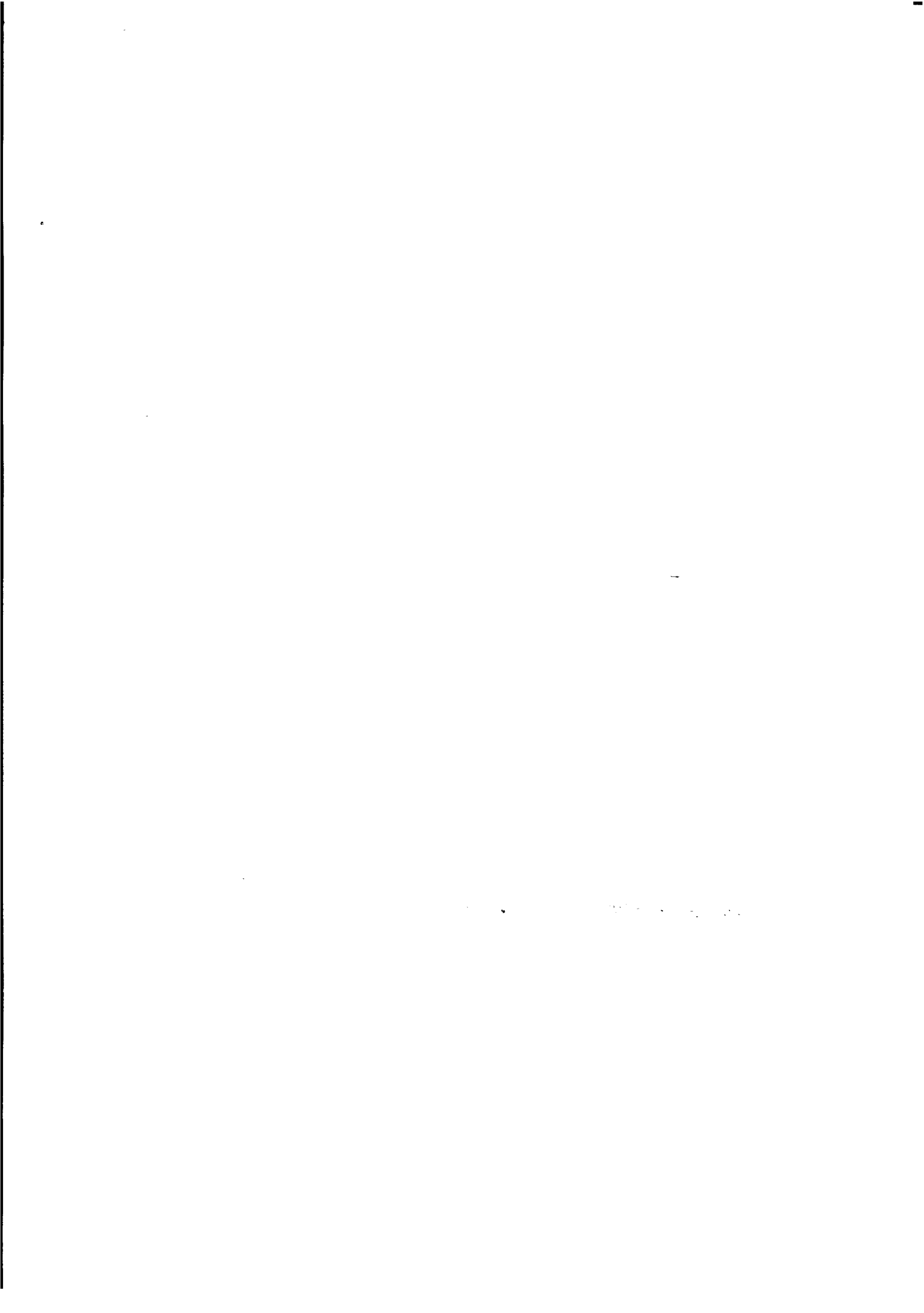


**TASMANIAN STATISTICAL INDICATORS  
MAY 1998**

**Denis W. Rogers  
Regional Director, Tasmania**

**AUSTRALIAN BUREAU OF STATISTICS**

**CATALOGUE NO. 1303.6**



## CONTENTS

	Page
MAIN FEATURES	v
TABLES	
<b>1</b> Population	1
<b>2</b> Births, deaths and marriages registered	1
<b>3</b> Labour force status	2
<b>4</b> Labour force status by region, males	3
<b>5</b> Labour force status by region, females	4
<b>6</b> Labour force status by region, persons	5
<b>7</b> Teenage labour market	6
<b>8</b> All employed persons by occupation	7
<b>9</b> Employed wage and salary earners, sector and industry	8
<b>10</b> Average hours worked	8
<b>11</b> Job vacancies	9
<b>12</b> Industrial disputes	9
<b>13</b> Average weekly earnings of employees	10
<b>14</b> Indexes of total hourly rates of pay	10
<b>15</b> Summary of annual movements in wages and prices	11
<b>16</b> House price index numbers, Hobart	11
<b>17</b> Consumer price index, Hobart and eight capital cities combined	12
<b>18</b> Price index of materials used in building other than house building, Hobart	13, 14
<b>19</b> Production of selected commodities	15
<b>20</b> Livestock slaughtering: original	16
<b>21</b> Livestock slaughtering: seasonally adjusted and trend	16
<b>22</b> Meat production	17
<b>23</b> Principal mineral concentrates produced	17
<b>24</b> Sawmills and plywood mills, logs delivered and timber produced	18
<b>25</b> Chipping and grinding of wood	18
<b>26</b> Logs delivered for milling or chipping	19
<b>27</b> Building approvals	20

---

### INQUIRIES

- *for further information about statistics in this publication and the availability of related unpublished statistics, contact the Hobart office of the ABS on (03) 6222 5800.*
  - *for information about other ABS statistics and services, please refer to the back cover of this publication.*
-

<b>28</b>	Secured housing commitments	20
<b>29</b>	Banking statistics	21
<b>30</b>	Private new capital expenditure by type of asset	21
<b>31</b>	Passenger arrivals and departures, Tasmania	22
<b>32</b>	Total passenger arrivals by air and sea, Tasmania	22
<b>33</b>	Accommodation statistics	23
<b>34</b>	Registrations of new motor vehicles	24
<b>35</b>	Turnover of retail establishments at current prices	24
<b>36</b>	Major Statistical Indicators—Australia and State comparisons	25
<b>37</b>	Major Statistical Indicators—Tasmanian Statistical Divisions	26
	EXPLANATORY NOTES	27
	MAP	
	Tasmanian Statistical Divisions	28

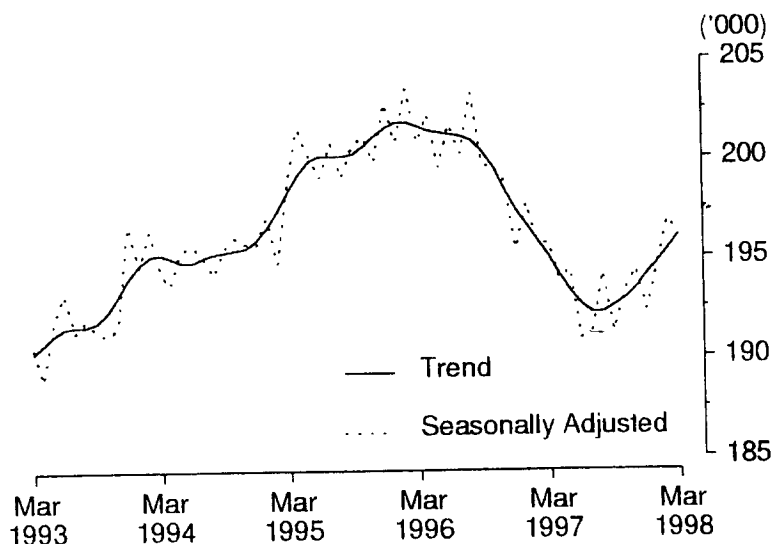
## MAIN FEATURES

### EMPLOYMENT

State comparisons  
Trend estimates

The Australian and State *trend* series comparisons are given on page 25. There was an increase of 0.6% in Tasmania's employment over the year to March 1998. The largest percentage increase in employment was in Queensland (4.1%). Next followed Western Australia (2.3%), Victoria (1.6%), and New South Wales and Tasmania (each with 0.6%).

### EMPLOYMENT, TASMANIA



Regional comparisons  
Original terms

In the Hobart and Southern Statistical Divisions the estimate of employment in original terms in March 1998 was 99,200, and compares with 99,500 in March 1997. The estimate of employment in the Northern Statistical Division in March 1998 was 53,300 and compares with 56,000 in March 1997. The estimate of employment in the Mersey-Lyell Statistical Division was 44,600 in March 1998, and compares with 41,300 in March 1997.

(See tables 4-6, pages 3-5.)

### THE LABOUR FORCE

Trend estimates

There were an estimated 219,700 persons (based on *trend* estimates) in the labour force in March 1998 and an estimated 369,200 civilian Tasmanians aged 15 years or more, yielding a labour force participation rate of 59.5%. This compares with 59.1% in March 1997.

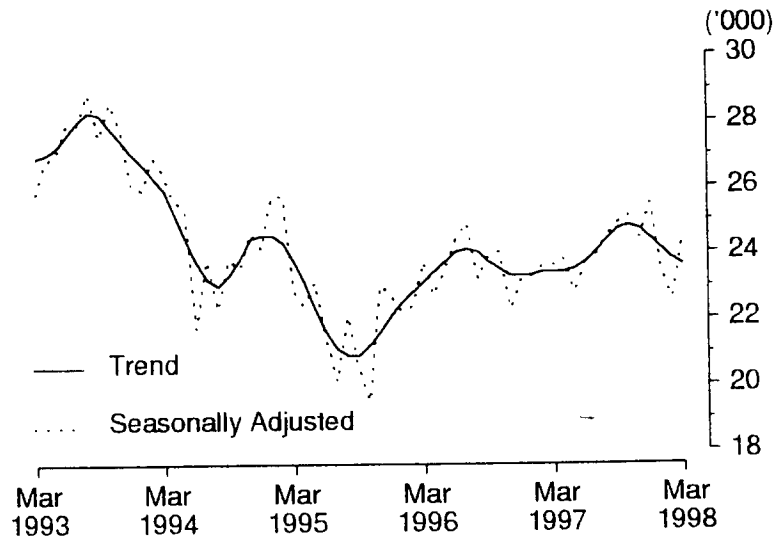
For males, the *trend* estimate of the participation rate was 70.0%, compared with 69.6% for March 1997. For females, the *trend* estimate of the participation rate was 49.3%, compared with 49.0% in March 1997.

(See table 3, page 2.)

UNEMPLOYMENT

Trend estimates The *trend* estimate of the number of unemployed persons in Tasmania for March 1998 was 23,600. This compares with 23,400 for March 1997. The *trend* estimate of the unemployment rate of 10.8% in March 1998 compares with 10.7% in March 1997. (See table 3, page 2.)

UNEMPLOYMENT, TASMANIA



WAGE COST INDEX:

Indexes of total hourly rates of pay (excluding bonuses)

Original terms The index of total hourly rates of pay excluding bonuses for all employee jobs in Australia increased by 0.8% from the September quarter 1997 to the December quarter 1997. For Tasmania, the index increased by 0.4%.

The largest increase in the indexes at the industry level for Tasmania was for Transport and storage (1.7%), followed by Education (0.9%) and Finance and insurance (0.6%).

The largest increase in the indexes at the occupation level for Tasmania was for Elementary clerical, sales and service workers (1.6%); followed by Professionals (0.6%).

BUILDING MATERIALS PRICE INDEXES

Original terms The price index of materials used in house building in Hobart increased by 0.5% during the March quarter 1998, and by 0.9% during the twelve months ending March 1998. All of the six State capital cities recorded increases over the twelve months ending March, with Sydney recording the highest increase over the period, at 4.1%. The weighted average of the six State capital cities increased by 2.2% over the same period.



For materials used in building other than house building, the price index for Hobart recorded an increase of 1.0% over the year ending March 1998. All of the other State capitals recorded increases with the exception of Perth, which fell by 0.6%. Sydney recorded the highest increase at 1.1%. The index for the weighted average of the six State capital cities increased by 0.6% over the same period.

Components in Hobart's price index of materials other than house building that recorded the largest increases over the year ending March 1998 were ready mixed concrete (up 3.2%), clay bricks (up 2.9%) and paint and other coatings (up 2.4%). These rises were partly offset by falls in the prices of sand and aggregate (down 5.2%) and builders' hardware (down 3.7%).

*(See table 15, page 11 and table 18, page 13.)*

## CONSUMER PRICE INDEX

Original terms The Consumer Price Index All Groups Index for Hobart rose by 0.5% in the December quarter of 1997 and fell by 0.1% for the year ending December 1997. This compared with an increase of 0.3% for the weighted average of the eight capital cities for the December quarter, and a fall of 0.2% for the year.

The only capital city to record an increase in the index for the year ending December 1997 was Brisbane with an increase of 0.5%. Capital cities recording the largest decrease were Canberra (-1.3%) and Adelaide (-1.1%).

*(See table 17, page 12.)*

## HOUSE PRICE INDEXES

Original terms The price index for established houses in Hobart increased by 0.3% in the December quarter 1997, but still decreased by 3.6% over the twelve months ending December. This was due to the effect of several quarters of negative change during the year. All of the eight capital cities recorded increases in the December quarter, with Melbourne being the highest at 5.3%. Hobart's increase was the smallest.

The price index for project homes recorded no change for Hobart in the December quarter, as for the previous six quarters. Canberra and Sydney indexes also recorded no change for the quarter, while most of the other capital cities recorded a small increase. Adelaide was the highest at 0.5%. The index for the weighted average of the eight capitals rose by 0.1%.

For the twelve months ending December, Adelaide recorded the highest increase at 4.8%, while the index in Canberra fell by 0.3%.

*(See table 16, page 11.)*

## LIVESTOCK SLAUGHTERING

Trend estimates In February 1998, the *trend* estimate for the slaughtering of cattle and calves in Tasmania was 2.2% higher than the previous month. Over the same period, the number of sheep and lambs slaughtered increased by 1.1% and the number of pigs slaughtered increased, by 1.6% to just over 6,700.

In February 1998, the *trend* estimate of the number of cattle and calves slaughtered was 25,000 which was 13.2% above the number slaughtered in February 1997.

The *trend* estimate for the slaughtering of sheep and lambs was 78,300 in February 1998, which was 16.6% above the number slaughtered in February 1997. This was 26.6% above the *trend* estimate for February 1996.

The *trend* estimate of 6,700 pigs slaughtered in February 1998 was 4.8% above the number slaughtered in February 1997, and 7.0% below the *trend* estimate for February 1996.

(See table 21, page 16.)

## BUILDING APPROVALS

Original terms There were 121 dwelling units approved during February 1998 in Tasmania. This was 9.0% below the January 1998 figure of 133 and 20.9% below the number recorded for February 1997 (153).

For the twelve months ended February 1998 there were 1,736 new dwelling units approved, 15.6% below the 2,056 units recorded for the twelve months ended February 1997.

The value of new residential buildings approved, at current prices, in February 1998 was \$10.1 million, 14.0% below the January 1998 figure and 26.6% below the February 1997 figure.

The value of all building approved, at current prices, in February 1998 was \$19.3 million, 30.7% below the January 1998 figure and 34.4% below the February 1997 figure.

(See table 27, page 20.)

## HOUSING FINANCE

Trend Estimates The *trend* estimate for the number of new secured housing finance commitments entered into in Tasmania in February 1998 was 853 dwellings, an increase over the previous month's figure of 844, and higher than the February 1997 figure of 830.

The value of new commitments has risen steadily since March 1997 to the February 1998 figure of \$65.2 million. When compared with the February 1997 value of \$57.1 million, an increase of 14.2% is observed.

Nationally, the total number of secured housing commitments entered into in February 1998 was 40,251, a decrease from the previous month's figure of 40,343. The value of these commitments decreased between January 1998 and February 1998 to \$4,612.9 million.

(See table 28, page 20.)

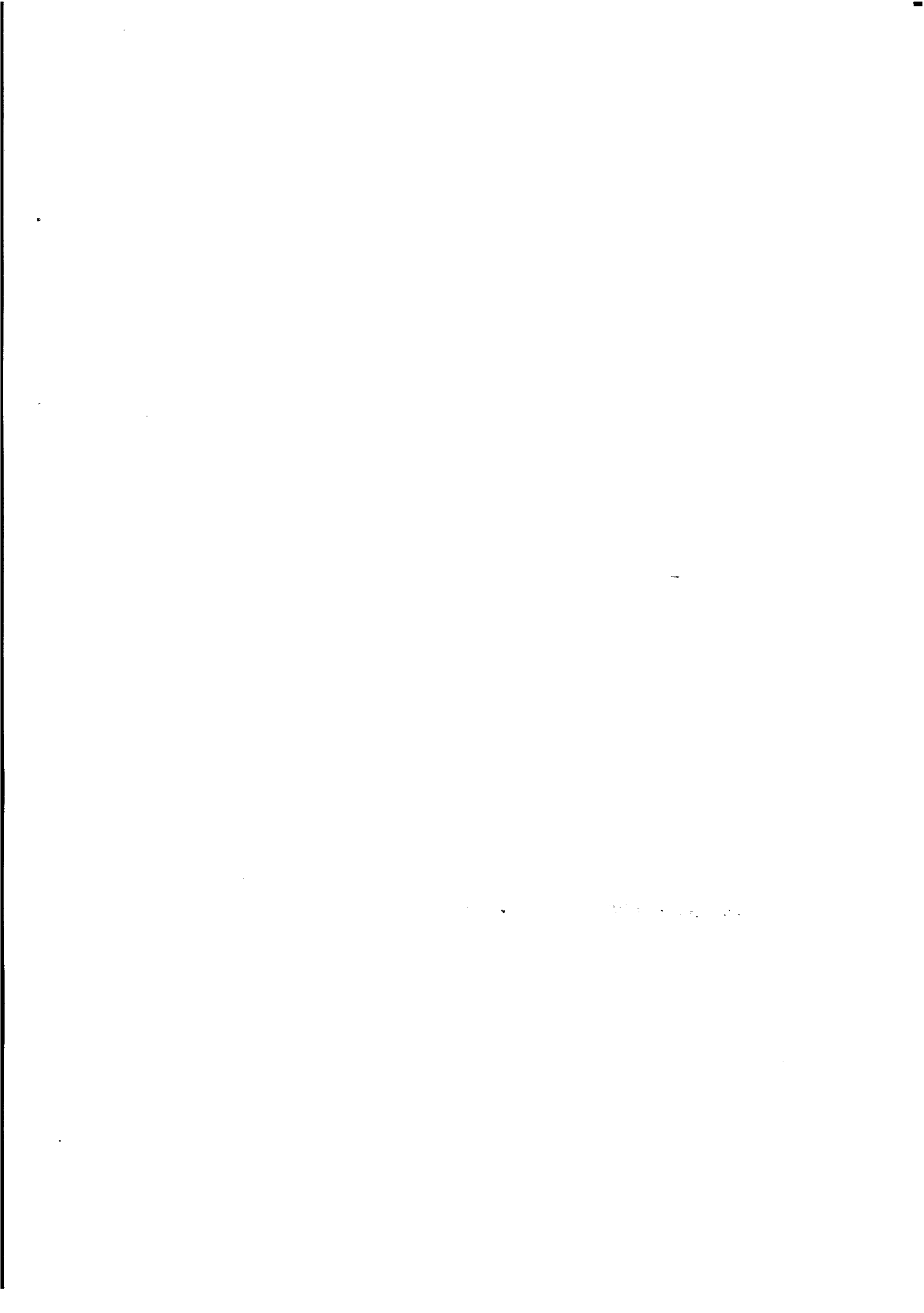
## NEW MOTOR VEHICLE REGISTRATIONS

Original terms There were 925 new motor vehicles (excluding motorcycles) registered in Tasmania during January 1998. This was 57.0% below the 2,153 registered in December 1997 and 1.1% below the figure for January 1997 (935). Of the new motor vehicles (excluding motorcycles) registered in January 1998 in Tasmania, 12 were vehicles registered by vehicle rental businesses compared with 865 registered by vehicle rental businesses in December 1997 and 4 in January 1997.  
(See table 34, page 24.)

## RETAIL

Original terms In *original* terms, the estimate of retail turnover in Australia for February 1998 was \$9,945.5 million, 3.2% above the figure recorded in February 1997. In *original* terms, the estimate of retail turnover in Tasmania for February 1998 was \$245.1 million, 4.8% above the figure recorded in February 1997.

Trend estimates The *trend* estimate of retail turnover in Australia for February 1998 was \$11,276.4 million, 4.3% above the figure recorded in February 1997. The *trend* estimate of retail turnover in Tasmania for February 1998 was \$266.6 million, 3.0% above the figure recorded in February 1997.  
(See table 35, page 24.)



# 1

## POPULATION: Original

Year or quarter	Estimated resident population at end of period	Natural increase <sup>1</sup>	Net estimated migration gain	Total population growth	Annual growth rate <sup>2</sup>
	'000	'000	'000	'000	%
<b>Year ended 30 June</b>					
1993	471.7	3.1	- 1.4	1.8	0.39
1994	473.0	3.1	- 1.9	1.3	0.27
1995	473.7	3.0	- 2.3	0.7	0.16
1996	474.4	2.5	- 2.2	0.8	0.16
1997 p	473.5	2.4	- 3.4	- 0.9	- 0.20
<b>Quarter</b>					
<b>1996</b>					
March	474.2	0.7	- 0.8	0.1	0.11
June	474.4	0.5	- 0.4	0.3	0.16
September p	474.5	0.6	- 0.5	0.0	0.10
December p	474.1	0.6	- 1.1	- 0.4	- 0.01
<b>1997</b>					
March p	473.6	0.7	- 1.1	- 0.5	- 0.13
June p	473.5	0.6	- 0.7	- 0.1	- 0.20
September p	472.7	0.5	- 1.3	- 0.8	- 0.37

<sup>1</sup> Excess of live births registered over deaths registered (based on usual State of residence).

<sup>2</sup> Percentage growth from same quarter in previous year.

(Source: Australian Demographic Statistics, ABS catalogue number 3101.0)

# 2

## BIRTHS, DEATHS AND MARRIAGES REGISTERED: Original

Year or quarter	Births		Deaths		Infant mortality <sup>1</sup>		Marriages	
	No.	Rate <sup>2</sup>	No.	Rate <sup>2</sup>	Deaths	Rate <sup>3</sup>	No.	Rate <sup>2</sup>
<b>Year ended 31 December</b>								
1992	6 956	14.8	3 722	7.9	43	6.2	3 081	6.5
1993	6 804	14.4	3 618	7.7	37	5.4	3 055	6.5
1994	6 836	14.4	3 909	8.3	46	6.7	2 887	6.1
1995	6 558	13.8	3 739	7.9	36	5.5	2 840	6.0
1996	6 431	13.6	3 878	8.2	27	4.2	2 654	5.6
<b>Quarter</b>								
<b>1996</b>								
March	1 767	..	979	..	10	5.7	858	..
June	1 524	..	969	..	6	3.9	789	..
September	1 607	..	1 028	..	8	5.0	349	..
December	1 533	..	902	..	3	2.0	658	..
<b>1997</b>								
March p	1 521	..	862	..	6	3.9	896	..
June p	1 543	..	973	..	8	5.2	600	..
September p	1 559	..	1 093	..	10	6.4	554	..

<sup>1</sup> Registered deaths of children under one year of age.

<sup>2</sup> Rate per 1,000 of estimated mean population.

<sup>3</sup> Rate per 1,000 live births.

(Source: Australian Demographic Statistics, ABS catalogue number 3101.0)

## 3

LABOUR FORCE STATUS<sup>1</sup>: Seasonally adjusted and trend

Month	Seasonally adjusted series <sup>2</sup>				Trend series <sup>2</sup>			
	Employed	Unemployed	Unemployment rate	Participation rate	Employed	Unemployed	Unemployment rate	Participation rate
	'000	'000	%	%	'000	'000	%	%
MALES								
<b>1997</b>								
March	113.1	14.1	11.1	70.0	112.3	14.2	11.2	69.6
April	111.5	14.9	11.8	69.6	111.9	14.2	11.3	69.4
May	112.2	13.5	10.7	69.2	111.7	14.2	11.3	69.3
June	110.9	13.8	11.1	68.6	111.7	14.2	11.3	69.2
July	110.9	15.2	12.1	69.4	111.8	14.2	11.3	69.3
August	112.5	14.5	11.4	69.8	111.9	14.5	11.5	69.5
September	112.7	13.5	10.7	69.4	112.0	14.8	11.7	69.7
October	112.4	15.6	12.2	70.4	112.0	15.2	11.9	69.9
November	111.9	15.6	12.3	70.2	111.8	15.4	12.1	70.0
December	109.9	16.9	13.3	69.7	111.6	15.6	12.3	70.0
<b>1998</b>								
January	112.2	15.2	11.9	70.1	111.5	15.7	12.3	70.0
February	112.0	14.7	11.6	69.8	111.4	15.7	12.4	70.0
March	111.2	16.1	12.6	70.1	111.4	15.8	12.4	70.0
FEMALES								
<b>1997</b>								
March	82.6	9.5	10.3	49.0	82.7	9.2	10.0	49.0
April	82.4	8.9	9.8	48.6	82.2	9.2	10.1	48.7
May	82.2	9.4	10.2	48.7	81.6	9.3	10.3	48.4
June	80.0	9.9	11.0	47.8	81.0	9.5	10.5	48.2
July	80.5	8.7	9.7	47.4	80.5	9.8	10.8	48.0
August	81.7	10.0	10.9	48.8	80.3	9.9	11.0	48.0
September	78.5	11.4	12.7	47.8	80.4	9.9	10.9	48.0
October	80.9	9.5	10.5	48.1	80.9	9.6	10.6	48.2
November	82.5	8.8	9.6	48.6	81.6	9.2	10.1	48.3
December	82.5	8.6	9.4	48.4	82.4	8.8	9.6	48.5
<b>1998</b>								
January	82.3	8.2	9.1	48.2	83.2	8.4	9.2	48.8
February	84.8	7.9	8.5	49.4	84.0	8.1	8.8	49.0
March	84.8	8.4	9.0	49.7	84.7	7.9	8.5	49.3
TOTAL								
<b>1997</b>								
March	195.7	23.6	10.7	59.4	195.0	23.4	10.7	59.1
April	193.9	23.8	10.9	58.9	194.1	23.4	10.8	58.9
May	194.4	22.8	10.5	58.8	193.3	23.5	10.9	58.7
June	190.9	23.7	11.0	58.1	192.6	23.7	11.0	58.5
July	191.3	23.9	11.1	58.2	192.2	24.0	11.1	58.5
August	194.2	24.5	11.2	59.1	192.2	24.4	11.3	58.6
September	191.2	24.9	11.5	58.4	192.5	24.7	11.4	58.7
October	193.3	25.1	11.5	59.1	192.9	24.8	11.4	58.9
November	194.4	24.4	11.2	59.2	193.4	24.7	11.3	59.0
December	192.3	25.5	11.7	58.9	194.1	24.4	11.2	59.1
<b>1998</b>								
January	194.5	23.4	10.8	59.0	194.7	24.1	11.0	59.2
February	196.9	22.6	10.3	59.4	195.4	23.8	10.9	59.3
March	196.0	24.5	11.1	59.7	196.1	23.6	10.8	59.5

<sup>1</sup> For explanation of terms and concepts, refer to *Labour Force, Australia*, ABS catalogue number 6203.0.

<sup>2</sup> Seasonal factors are reviewed annually to take account of each additional year's original data. The results of the review are used to compile revised seasonally adjusted and trend estimates each February. Trend estimates for the most recent months are also revised each month; see Explanatory Notes. (Source: *Labour Force Australia*, ABS catalogue number 6203.0)

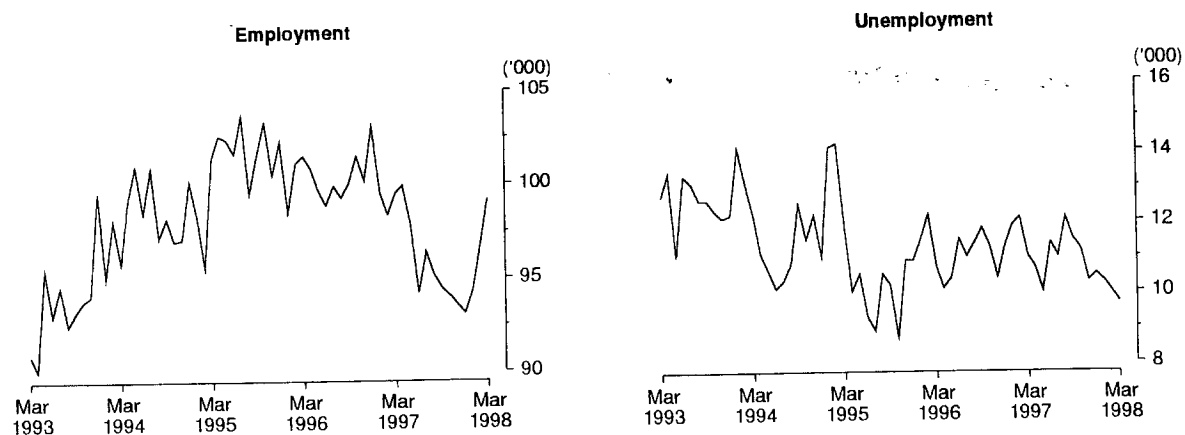
# 4 LABOUR FORCE STATUS BY REGION, MALES<sup>1, 2</sup>: Original

Month		Total employed	Total unemployed	Unemployment rate	Participation rate
		'000	'000	%	%
HOBART AND SOUTHERN STATISTICAL DIVISIONS					
1995	March	56.8	7.7	11.9	72.3
1997	March	55.4	6.4	10.3	68.5
1998	January	53.3	6.3	10.6	70.7
	February	53.7	5.8	9.7	69.2
	March	55.0	5.9	9.7	70.2
NORTHERN STATISTICAL DIVISION					
1995	March	32.5	3.3	9.3	70.6
1997	March	34.2	3.9	10.1	72.9
1998	January	31.9	4.7	12.7	71.3
	February	31.7	5.1	13.8	73.1
	March	30.4	5.2	14.6	69.8
MERSEY-LYELL STATISTICAL DIVISION					
1995	March	25.3	2.8	9.9	69.6
1997	March	24.5	3.6	12.7	71.5
1998	January	27.3	5.3	16.2	70.9
	February	27.6	4.8	14.9	71.5
	March	26.8	4.6	14.7	71.9
TASMANIA					
1995	March	114.7	13.8	10.7	71.2
1997	March	114.1	13.8	10.8	70.4
1998	January	112.6	16.3	12.6	70.9
	February	113.0	15.7	12.2	70.8
	March	112.2	15.7	12.3	70.5

<sup>1</sup> For explanation of terms and concepts, refer to *Labour Force, Australia*, ABS catalogue number 6203.0.

<sup>2</sup> Data in this table are original series, i.e. they are not part of a seasonally adjusted or a trend series. Accordingly, care should be exercised when using these data. New monthly data from each quarter (March, June, September and December) are published two months after the quarter. (Source: Labour Force Estimates—microfiche tables.)

Hobart and Southern Statistical Divisions—Persons: **Original** (see Table 6.)



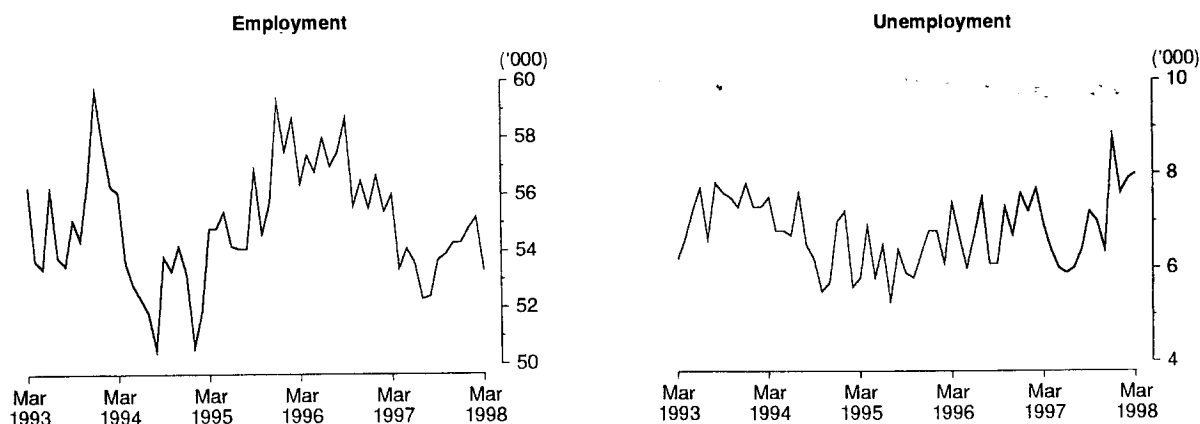
## 5

LABOUR FORCE STATUS BY REGION, FEMALES<sup>1, 2</sup>: **Original**

		Total employed	Total unemployed	Unemployment rate	Participation rate
Month		'000	'000	%	%
HOBART AND SOUTHERN STATISTICAL DIVISIONS					
1995	March	44.6	4.1	8.5	52.2
1997	March	44.1	4.6	9.4	51.0
1998	January	40.9	3.9	8.8	50.8
	February	43.0	4.2	8.8	52.6
	March	44.2	3.8	7.9	53.6
NORTHERN STATISTICAL DIVISION					
1995	March	22.3	2.4	9.8	47.7
1997	March	21.8	3.1	12.3	47.6
1998	January	22.9	3.0	11.5	48.4
	February	23.4	2.8	10.7	48.7
	March	23.0	2.8	10.8	47.8
MERSEY-LYELL STATISTICAL DIVISION					
1995	March	18.2	2.0	10.1	49.0
1997	March	16.8	2.1	10.9	46.9
1998	January	17.0	1.9	10.1	41.1
	February	16.8	1.9	10.0	42.4
	March	17.8	2.1	10.5	44.6
TASMANIA					
1995	March	85.2	8.6	9.2	50.3
1997	March	82.7	9.7	10.5	49.2
1998	January	80.8	8.8	9.8	47.7
	February	83.3	8.9	9.6	49.1
	March	84.9	8.6	9.2	49.8

<sup>1</sup> For explanation of terms and concepts, refer to *Labour Force, Australia*, ABS catalogue number 6203.0.

<sup>2</sup> Data in this table are original series, i.e. they are not part of a seasonally adjusted or a trend series. Accordingly, care should be exercised when using these data. New monthly data from each quarter (March, June, September and December) are published two months after the quarter. (Source: Labour Force Estimates—microfiche tables.)

Northern Statistical Division—Persons: **Original** (see Table 6.)



# 6

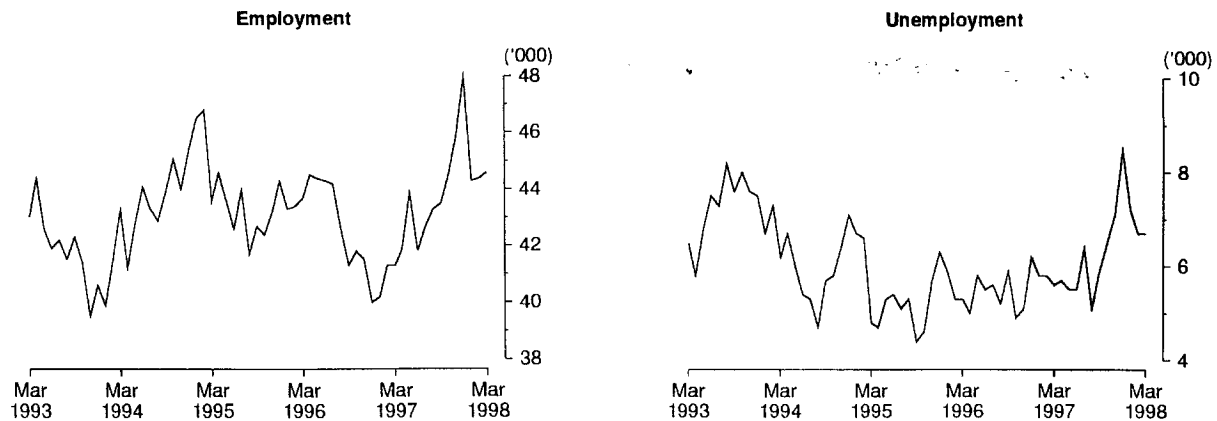
## LABOUR FORCE STATUS BY REGION, PERSONS<sup>1, 2</sup>: Original

Month		Total employed	Total unemployed	Unemployment rate	Participation rate
		'000	'000	%	%
<b>HOBART AND SOUTHERN STATISTICAL DIVISIONS</b>					
1995	March	101.5	11.8	10.4	62.0
1997	March	99.5	11.0	9.9	59.5
1998	January	94.3	10.3	9.8	60.5
	February	96.7	10.0	9.3	60.7
	March	99.2	9.7	8.9	61.8
<b>NORTHERN STATISTICAL DIVISION</b>					
1995	March	54.8	5.8	9.5	59.0
1997	March	56.0	6.9	11.0	60.3
1998	January	54.8	7.6	12.2	59.6
	February	55.2	7.9	12.5	60.5
	March	53.3	8.0	13.0	58.5
<b>MERSEY-LYELL STATISTICAL DIVISION</b>					
1995	March	43.6	4.8	10.0	59.2
1997	March	41.3	5.6	12.0	59.0
1998	January	44.3	7.2	14.0	56.0
	February	44.4	6.7	13.1	57.1
	March	44.6	6.7	13.0	58.1
<b>TASMANIA</b>					
1995	March	199.9	22.4	10.1	60.6
1997	March	196.8	23.5	10.7	59.6
1998	January	193.4	25.1	11.5	59.1
	February	196.3	24.6	11.1	59.8
	March	197.1	24.4	11.0	60.0

<sup>1</sup> For explanation of terms and concepts, refer to *Labour Force, Australia*, ABS catalogue number 6203.0.

<sup>2</sup> Data in this table are original series, i.e. they are not part of a seasonally adjusted or a trend series. Accordingly, care should be exercised when using these data. New monthly data from each quarter (March, June, September and December) are published two months after the quarter. (Source: Labour Force Estimates—microfiche tables.)

Mersey-Lyell Statistical Division—Persons: **Original** (see Table 6.)



## 7

TEENAGE LABOUR MARKET<sup>1, 2</sup>: Original

Month	Employed		Unemployed		Labour force	Not in labour force	Civilian population aged 15-19	Unemployment rate	Unemployment population ratio	Participation rate	
	Full-time	Total	Looking for full-time work	Total							
	'000	'000	'000	'000							
ATTENDING NEITHER SCHOOL NOR A TERTIARY INSTITUTION FULL TIME											
1995	March	6.8	10.3	3.1	3.3	13.6	1.5	15.1	24.2	21.9	89.9
1997	March	6.9	8.9	3.2	3.5	12.5	1.4	13.8	28.2	25.4	90.1
1998	January	6.4	10.2	3.1	3.4	13.5	2.1	15.6	24.8	21.5	86.8
	February	6.1	9.2	2.9	3.0	12.2	1.6	13.8	24.7	21.8	88.3
	March	5.7	8.1	3.7	3.7	11.8	1.3	13.1	31.6	28.5	90.3
ATTENDING SCHOOL OR A TERTIARY INSTITUTION FULL TIME											
1995	March	0.1	4.1	0.3	0.8	4.9	10.3	15.2	16.1	5.3	32.3
1997	March	0.1	5.2	0.6	2.4	7.6	12.9	20.5	32.0	11.9	37.0
1998	January	0.5	5.9	0.6	2.4	8.2	10.7	18.9	28.8	12.6	43.5
	February	0.3	6.8	0.6	1.7	8.5	12.2	20.7	20.3	8.4	41.2
	March	0.1	5.2	0.2	1.9	7.2	14.2	21.4	26.7	9.0	33.6
TOTAL											
1995	March	7.0	15.7	3.6	4.6	20.4	13.7	34.0	22.7	13.5	59.8
1997	March	7.0	14.1	3.8	5.9	20.0	14.2	34.3	29.6	17.3	58.4
1998	January	7.0	16.0	3.7	5.7	21.8	12.7	34.5	26.3	16.6	63.1
	February	6.4	16.0	3.5	4.7	20.7	13.8	34.5	22.9	13.8	60.0
	March	5.8	13.3	3.9	5.7	19.0	15.5	34.5	29.7	16.4	55.1

<sup>1</sup> Persons aged 15-19 years.

<sup>2</sup> For explanation of terms and concepts, refer to *Labour Force, Australia*, ABS catalogue number 6203.0.  
(Source: Labour Force Estimates—unpublished data.)

ALL EMPLOYED PERSONS BY OCCUPATION<sup>1, 2</sup>: Original

Occupation	February 1997			February 1998		Proportion of total employed	
	Persons	Males	Females	Persons	February 1997	February 1998	
	'000	'000	'000	'000	%	%	
<b>Managers and administrators</b>	<b>12.5</b>	<b>8.7</b>	<b>2.5</b>	<b>11.2</b>	<b>6.4</b>	<b>5.7</b>	
Generalist managers	1.5	1.4	0.0	1.4	0.8	0.7	
Specialist managers	4.3	3.0	0.8	3.8	2.2	1.9	
Farmers and farm managers	6.6	4.4	1.7	6.0	3.4	3.1	
<b>Professionals</b>	<b>30.0</b>	<b>16.9</b>	<b>13.7</b>	<b>30.6</b>	<b>15.4</b>	<b>15.6</b>	
Science, building and engineering professionals	4.0	3.2	0.8	4.0	2.1	2.0	
Business and information professionals	4.5	4.2	2.1	6.3	2.3	3.2	
Health professionals	8.3	2.0	4.8	6.9	4.3	3.5	
Education professionals	6.4	3.0	4.4	7.5	3.3	3.8	
Social, arts and miscellaneous professionals	6.8	4.5	1.5	5.9	3.5	3.0	
<b>Associate professionals</b>	<b>17.6</b>	<b>12.4</b>	<b>6.1</b>	<b>18.5</b>	<b>9.0</b>	<b>9.4</b>	
Science, engineering and related associate professionals	2.9	1.4	0.3	1.8	1.5	0.9	
Business and administration associate professionals	2.2	2.4	0.9	3.3	1.1	1.7	
Managing supervisors (sales and service)	8.9	6.9	3.6	10.5	4.6	5.3	
Other associate professionals	3.6	1.7	1.2	2.9	1.8	1.5	
<b>Tradespersons and related workers</b>	<b>27.5</b>	<b>25.4</b>	<b>3.8</b>	<b>29.2</b>	<b>14.1</b>	<b>14.9</b>	
Mechanical and fabrication engineering tradespersons	6.0	6.1	0.0	6.1	3.1	3.1	
Automotive tradespersons	2.7	3.4	0.0	3.4	1.4	1.7	
Electrical and electronics tradespersons	4.4	3.4	0.0	3.4	2.3	1.7	
Construction Tradespersons	6.1	5.6	0.0	5.6	3.1	2.9	
Other tradespersons and related workers	8.3	6.9	3.8	10.7	4.3	5.5	
<b>Advanced clerks and service workers</b>	<b>3.6</b>	<b>0.5</b>	<b>3.5</b>	<b>4.0</b>	<b>1.8</b>	<b>2.0</b>	
Secretaries and personal assistants	2.1	0.0	2.3	2.3	1.1	1.2	
Other advanced clerical and service workers	1.4	0.5	1.2	1.7	0.7	0.9	
<b>Intermediate clerical, sales and service workers</b>	<b>38.9</b>	<b>11.4</b>	<b>29.3</b>	<b>40.7</b>	<b>19.9</b>	<b>20.7</b>	
Intermediate clerical workers	23.6	6.0	18.8	24.8	12.1	12.6	
Intermediate sales and related workers	3.0	2.7	1.0	3.7	1.5	1.9	
Intermediate service workers	12.2	2.7	9.5	12.2	6.3	6.2	
<b>Intermediate production and transport workers</b>	<b>20.1</b>	<b>16.9</b>	<b>2.1</b>	<b>19.0</b>	<b>10.3</b>	<b>9.7</b>	
Intermediate plant operators	6.9	5.4	0.0	5.4	3.5	2.8	
Intermediate machine operators	2.1	1.4	0.7	2.0	1.1	1.0	
Road and rail transport drivers	6.9	5.8	0.7	6.4	3.5	3.3	
Other intermediate production and transport workers	4.2	4.4	0.7	5.1	2.2	2.6	
<b>Elementary clerical, sales and service workers</b>	<b>22.3</b>	<b>8.0</b>	<b>13.9</b>	<b>21.8</b>	<b>11.4</b>	<b>11.1</b>	
Elementary clerks	3.1	0.7	0.7	1.4	1.6	0.7	
Elementary sales workers	16.6	6.3	12.3	18.7	8.5	9.5	
Elementary service workers	2.5	1.0	0.9	1.8	1.3	0.9	
<b>Labourers and related workers</b>	<b>22.7</b>	<b>12.8</b>	<b>8.6</b>	<b>21.4</b>	<b>11.6</b>	<b>10.9</b>	
Cleaners	5.6	2.1	4.2	6.4	2.9	3.3	
Factory labourers	4.7	2.8	1.2	3.9	2.4	2.0	
Other labourers and related workers	12.4	7.9	3.2	11.0	6.4	5.6	
<b>Total employed</b>	<b>195.1</b>	<b>113.0</b>	<b>83.3</b>	<b>196.3</b>	<b>100.0</b>	<b>100.0</b>	

<sup>1</sup> From August 1997, revisions to the Australian Standard Classification of Occupations (ASCO) have resulted in changes to this table.

<sup>2</sup> For explanation of terms and concepts, refer to *Labour Force, Australia*, ABS catalogue number 6203.0.

(Source: Labour Force Estimates—unpublished data.)

## 9

EMPLOYED WAGE AND SALARY EARNERS, SECTOR AND INDUSTRY<sup>1</sup>: Original

Industry	Employees, August 1997			Percentage distribution	
	Private No. ('000)	Public No. ('000)	Private and public No. ('000)	August 1995	August 1997
Agriculture, forestry, & fishing	n.a.	0.6	0.6	n.a.	0.4
Mining	1.7	—	1.7	1.7	1.0
Manufacturing	21.7	0.1	21.8	14.0	13.2
Electricity, gas & water, Construction	6.5	2.2	8.7	6.1	5.3
Wholesale & Retail trade	31.0	—	31.1	19.0	18.8
Accommodation, cafes & restaurants	11.1	—	11.1	6.2	6.7
Transport & storage	4.3	1.1	5.4	3.6	3.3
Communication services	0.5	2.2	2.7	1.5	1.6
Finance, insurance, Property & business services	17.1	1.0	17.9	9.9	10.8
Education	4.0	14.0	18.0	10.8	10.9
Government administration and defence	—	10.0	10.0	7.1	6.1
Health and community services	14.4	9.2	23.6	14.6	14.3
Cultural, recreational, Personal and other services	10.1	2.5	12.5	5.3	7.6
<b>Total all industries</b>	<b>122.4</b>	<b>42.8</b>	<b>165.2</b>	<b>100.0</b>	<b>100.0</b>

<sup>1</sup> For explanation of terms and concepts, refer to *Employed Wage and Salary Earners, Australia*, catalogue number 6248.0.  
(Source: *Employed Wage and Salary Earners*, ABS catalogue number 6248.0.)

## 10

## AVERAGE HOURS WORKED: Original

Month	Average weekly total hours worked, all employed persons <sup>1</sup>			Average weekly overtime hours <sup>2</sup>		Percentage of employees working overtime
	Males	Females	Persons	Per employee	Per employee working overtime	
<b>1994</b>						
February	37.6	25.8	32.7	1.0	6.9	14.0
<b>1996</b>						
February	37.7	25.6	32.7	0.9	6.5	14.1
<b>1997</b>						
February	38.0	26.2	33.1	0.9	6.6	13.6
May	39.4	27.8	34.4	0.8	5.9	13.3
August	38.4	26.8	33.5	0.7	6.5	11.0
November	38.7	26.8	33.6	0.6	6.3	9.2
<b>1998</b>						
February	37.8	26.1	32.8	0.7	6.7	9.8

<sup>1</sup> For explanation of terms and concepts, refer to *Labour Force, Australia*, ABS catalogue number 6203.0.

<sup>2</sup> For explanation of terms and concepts, refer to *Job Vacancies and Overtime, Australia*, ABS catalogue number 6354.0.  
(Source: *Job Vacancies and Overtime, Australia*, ABS catalogue number 6354.0 and unpublished data.)

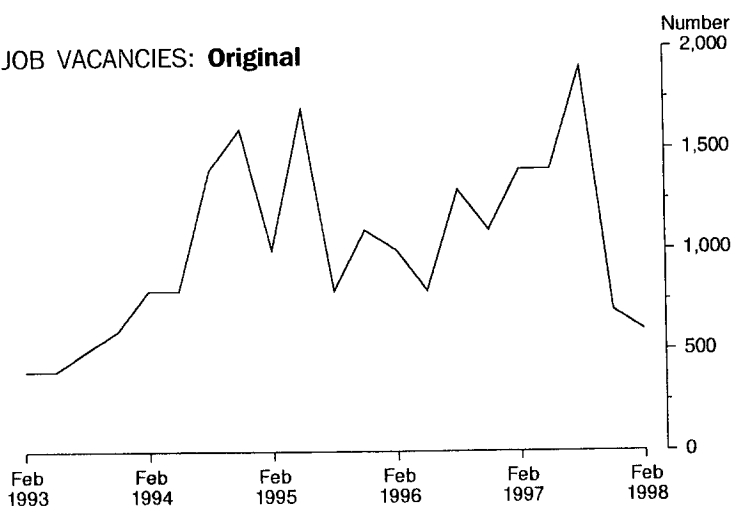
## 11 JOB VACANCIES<sup>1</sup>: Original

Period	Number '000	Rate <sup>2</sup> %
<b>1995</b>		
February	1.0	0.7
<b>1997</b>		
February	1.4	1.0
May	1.4	1.0
August	1.9	1.4
November	0.7	0.5
<b>1998</b>		
February	0.6	0.4

<sup>1</sup> For explanation of terms and concepts refer to *Job Vacancies and Overtime, Australia*, catalogue number 6354.0.

<sup>2</sup> Job vacancies are expressed as a percentage of the number of job vacancies divided by the number of employees plus job vacancies.

### JOB VACANCIES: Original



## 12 INDUSTRIAL DISPUTES<sup>1</sup>: Original

Month	Working days lost '000	Twelve months ending	Working days lost per thousand employees no.
<b>1997</b>		<b>1997</b>	
January	0.0	January	73
February	0.0	February	73
March	0.0	March	73
April	0.0	April	73
May	1.4	May	81
June	0.0	June	79
July	3.7	July	75
August	0.0	August	43
September	0.3	September	36
October	0.1	October	36
November	0.1	November	35
December	0.0	December	35
<b>Twelve months ended 1997</b>			
December	5.7		

<sup>1</sup> For explanation of terms and concepts, refer to *Industrial Disputes, Australia*, ABS catalogue number 6321.0.

## 13

AVERAGE WEEKLY EARNINGS OF EMPLOYEES<sup>1</sup>: Original and trend

Survey reference period	Full-time adult males		All males	Full-time adult females		All females	Full-time adult persons		All employees	
	Weekly ordinary time earnings	Weekly total earnings	Weekly total earnings	Weekly ordinary time earnings	Weekly total earnings	Weekly total earnings	Weekly ordinary time earnings	Weekly total earnings	Weekly total earnings	
	\$	\$	\$	\$	\$	\$	\$	\$	\$	
ORIGINAL										
<b>1996</b>	August	666.90	699.20	624.30	556.30	567.40	387.70	629.10	654.10	506.50
	November	688.50	728.50	643.00	574.20	584.90	393.70	649.90	680.00	517.70
<b>1997</b>	February	705.80	742.10	658.80	584.30	594.80	407.80	664.40	691.90	533.10
	May	707.30	744.60	652.70	576.30	586.20	397.00	662.30	690.20	524.20
	August	717.60	753.90	636.40	583.90	592.20	400.70	671.10	697.80	519.40
	November	732.70	765.40	661.60	595.00	605.40	399.10	686.10	711.20	528.00
TREND <sup>2</sup>										
<b>1996</b>	August	672.50	709.80	632.10	567.80	579.30	391.10	637.20	665.90	511.00
	November	686.70	723.20	642.80	571.30	582.20	394.20	647.30	675.10	518.00
<b>1997</b>	February	700.40	737.10	648.50	576.40	586.40	399.50	657.90	685.40	523.90
	May	711.00	748.00	650.60	581.90	591.80	402.70	666.80	694.40	526.30
	August	719.60	755.90	652.40	586.80	596.30	401.50	674.10	701.40	526.40
	November	728.00	762.90	654.50	591.30	600.20	396.70	681.20	707.50	524.80

<sup>1</sup> For explanation of terms and concepts, refer to *Average Weekly Earnings, States and Australia*, ABS catalogue number 6302.0.

<sup>2</sup> ABS Trend estimates for the most recent months are revised, see Explanatory Notes.  
(Source: *Average Weekly Earnings, States and Australia*, ABS catalogue number 6302.0.)

## 14

INDEXES OF TOTAL HOURLY RATES OF PAY (EXCLUDING BONUSES)<sup>1</sup>: Original  
(Base of each index: September Quarter 1997 = 100.0)

Industry <sup>2</sup> or occupation	Index numbers		% change
	Sep quarter 1997	Dec quarter 1997	Sep quarter 1997 to Dec quarter 1997
SELECTED INDUSTRIES			
Manufacturing	100.0	100.2	0.2
Retail trade	100.0	100.3	0.3
Transport and storage	100.0	101.7	1.7
Finance and insurance	100.0	100.6	0.6
Property and business services	100.0	100.0	0.0
Government admin. and defence	100.0	100.1	0.1
Education	100.0	100.9	0.9
Health and community services	100.0	100.0	0.0
<b>All industries<sup>3</sup></b>	<b>100.0</b>	<b>100.4</b>	<b>0.4</b>
OCCUPATION			
Managers and administrators	100.0	n.a.	n.a.
Professionals	100.0	100.6	0.6
Associate professionals	100.0	100.4	0.4
Tradespersons and related workers	100.0	100.2	0.2
Advanced clerical and service workers	100.0	n.a.	n.a.
Intermediate clerical, sales and service workers	100.0	100.3	0.3
Intermediate production and transport workers	100.0	100.4	0.4
Elementary clerical, sales and service workers	100.0	101.6	1.6
Labourers and related workers	100.0	100.2	0.2
<b>All occupations</b>	<b>100.0</b>	<b>100.4</b>	<b>0.4</b>

<sup>1</sup> These indexes are a measure of quarterly changes in wage and salary costs for employee jobs. They were compiled for the first time for the December quarter 1997. They are one of four sets of indexes that together comprise the Wage Cost Index.

<sup>2</sup> For explanation of terms and concepts, refer to *Wage Cost Index, Australia*, ABS catalogue number 6345.0.

<sup>3</sup> Industry is shown at the ANZSIC division level for selected divisions.

<sup>3</sup> Excludes Agriculture, Forestry and Fishing.

(Source: ABS unpublished data.)

## 15

SUMMARY OF ANNUAL MOVEMENTS IN WAGES AND PRICES<sup>1</sup>: Original

Period	CPI. All groups Hobart	Price index of materials used in house building. All groups, Hobart <sup>2</sup>	Price index of materials used in building other than house building. All groups, Hobart <sup>2</sup>	Average weekly total earnings, full-time adult employees <sup>3</sup>
PERCENTAGE CHANGE FROM PREVIOUS YEAR				
1994-95	3.1	4.0	1.9	2.7
1995-96	3.8	2.9	2.6	2.8
1996-97	1.5	-0.5	1.0	4.6
<b>1995</b>				
June	4.2	4.6	3.4	3.1
September	4.5	4.8	3.5	2.4
December	4.4	3.6	3.3	1.8
<b>1996</b>				
March	3.4	2.4	2.5	3.2
June	3.0	0.9	1.2	3.7
September	2.3	-0.2	0.9	3.0
December	1.8	-0.8	0.7	4.9
<b>1997</b>				
March	1.5	-0.5	1.1	6.2
June	0.6	-0.4	1.3	4.2
September	-0.4	-0.2	0.6	6.7
December	-0.1	+0.7	0.9	4.6

<sup>1</sup> Weekly award rates of pay collection has been discontinued from June 1997.

<sup>2</sup> Only quarterly data collected from June 1997. Earlier data has been re-compiled from monthly to quarterly.

<sup>3</sup> March, June, September and December data relates to February, May, August and November survey dates as published in 6302.0.

(Sources: Consumer Price Index, ABS catalogue number 6401.0; Price Index of Materials Used in House Building, ABS catalogue number 6408.0, (quarterly from June 1997); Price Index of Materials Used in Other than House Building, ABS catalogue number 6407.0, (quarterly from June 1997); Average Weekly Earnings, States and Australia, ABS catalogue number 6302.0)

## 16

HOUSE PRICE INDEX NUMBERS<sup>1</sup>, HOBART: Original  
(Base of each Index: 1989-90 = 100.0)

	Established house price index		Project home price index	
	Index	% change <sup>2</sup>	Index	% change <sup>2</sup>
1994-95	129.0	5.3	121.3	3.1
1995-96	129.8	0.6	123.4	1.7
1996-97	128.5	-1.0	123.3	-0.1
<b>1995</b>				
December	129.1	-0.1	123.5	—
<b>1996</b>				
March	129.8	0.5	123.3	-0.2
June	131.2	1.1	123.3	—
September	130.2	-0.8	123.3	—
December	128.5	-1.3	123.3	—
<b>1997</b>				
March	130.4	1.5	123.3	—
June	124.9	-4.2	123.3	—
September	123.5	-1.1	123.3	—
December	123.9	0.3	123.3	—

<sup>1</sup> Used in calculating the mortgage interest charges component of the Consumer Price Index.

<sup>2</sup> Percentage change over previous period.

(Source: House Price Indexes: Eight Capital Cities, ABS catalogue number 6416.0)

CONSUMER PRICE INDEX, HOBART AND EIGHT CAPITAL CITIES COMBINED<sup>1, 2</sup>: **Original**  
(Base of each index: year 1989-90 = 100.0)

Period	Hobart					
	Food	Clothing	Housing	Household equipment and operation	Transportation	Tobacco and alcohol
<b>1995</b>						
June	116.1	106.1	104.5	115.4	117.2	143.1
September	117.3	105.9	106.0	116.5	119.4	144.3
December	117.1	105.6	106.5	117.5	120.1	145.9
<b>1996</b>						
March	118.1	106.3	107.2	117.8	119.0	150.3
June	118.4	106.0	107.6	118.5	119.8	153.3
September	120.0	105.9	107.4	119.1	119.7	153.7
December	120.6	105.6	104.8	119.4	121.8	152.7
<b>1997</b>						
March	120.7	105.7	101.9	120.1	122.8	153.1
June	121.0	105.3	98.4	120.1	121.7	153.5
September	121.0	104.8	97.7	119.7	122.2	153.6
December	121.7	106.0	95.5	119.7	122.1	155.6

Period	Hobart				Weighted average of eight capital cities	
	Health and personal care	Recreation and education	Index, all groups	% change over previous period, all groups	Index	% change over previous period
<b>1995</b>						
June	141.0	114.0	117.1	+0.9	116.2	+1.3
September	146.7	113.3	118.4	+1.1	117.6	+1.2
December	146.9	115.8	119.2	+0.7	118.5	+0.8
<b>1996</b>						
March	149.7	117.1	120.1	+0.8	119.0	+0.4
June	150.5	116.0	120.6	+0.4	119.8	+0.7
September	154.1	115.1	121.1	+0.4	120.1	+0.3
December	154.8	116.8	121.3	+0.2	120.3	+0.2
<b>1997</b>						
March	159.4	120.5	121.9	+0.5	120.5	+0.2
June	162.6	119.2	121.3	-0.5	120.2	-0.2
September	153.0	119.2	120.6	-0.6	119.7	-0.4
December	160.9	120.6	121.2	+0.5	120.0	+0.3

<sup>1</sup> Further information on construction of CPI indexes is contained in the bulletin *The Australian Consumer Price Index Concepts, Sources and Methods* (Catalogue No. 6461.0).

<sup>2</sup> The CPI is now published on a reference base of 1989-90 = 100.0.  
(Source: *Consumer Price Index*, ABS catalogue number 6401.0.)



PRICE INDEX OF MATERIALS USED IN BUILDING OTHER THAN HOUSE BUILDING, HOBART: **Original**<sup>1</sup>  
(Base year: 1989-90 = 100.0)

<i>Index numbers for selected major building materials</i>						
<i>Period</i>	<i>Structural timber</i>	<i>Clay bricks</i>	<i>Ready mixed concrete</i>	<i>Precast concrete products</i>	<i>Steel decking, cladding etc.</i>	<i>Structural steel</i>
1994-95	124.5	116.8	117.8	122.2	107.7	116.4
1995-96	119.0	122.6	115.2	129.5	111.5	121.4
1996-97	110.3	125.3	116.2	132.2	115.0	126.2
<b>1995</b>						
September	123.0	119.8	116.9	130.3	110.8	119.6
December	120.0	123.2	116.0	130.3	111.0	121.2
<b>1996</b>						
March	118.0	123.4	115.3	129.1	111.8	121.9
June	115.0	124.0	112.7	128.4	112.3	123.0
September	113.3	124.5	114.8	132.6	112.3	125.3
December	109.9	125.2	116.0	132.6	112.2	126.0
<b>1997</b>						
March	109.2	125.7	116.7	132.2	116.5	126.7
June	108.9	125.7	117.4	131.2	118.8	126.8
September	107.5	127.9	114.9	131.2	118.9	126.9
December	106.6	129.4	116.8	131.2	118.9	127.1
<b>1998</b>						
March	109.2	129.4	120.4	131.7	118.9	127.4

<i>Index numbers for selected major building materials</i>							
<i>Period</i>	<i>Reinforcing steel bar, fabric and mesh</i>	<i>Aluminium windows</i>	<i>Fabricated steel products</i>	<i>Builders' hardware</i>	<i>Sand &amp; aggregate</i>	<i>Paint &amp; other coatings</i>	<i>Non-ferrous pipes &amp; fittings</i>
1994-95	106.7	101.2	106.7	112.8	133.0	116.0	172.7
1995-96	108.9	104.5	108.9	118.3	133.1	120.1	172.9
1996-97	110.7	105.9	113.3	117.2	132.7	126.6	165.2
<b>1995</b>							
September	107.9	104.5	107.6	119.4	133.1	118.2	179.4
December	109.2	104.5	108.3	119.2	133.1	119.7	169.1
<b>1996</b>							
March	109.2	104.6	108.2	117.9	133.1	121.5	169.3
June	109.2	104.4	111.6	116.5	133.1	121.1	173.9
September	110.2	104.4	112.6	117.8	133.1	126.3	168.2
December	110.9	105.5	113.5	118.8	133.1	127.3	161.4
<b>1997</b>							
March	110.9	106.8	113.4	117.1	134.5	127.4	164.1
June	110.9	106.8	113.5	115.2	129.9	125.5	167.2
September	110.9	106.8	114.0	115.3	121.4	124.6	168.5
December	113.0	106.8	114.0	112.5	121.4	123.5	163.0
<b>1998</b>							
March	113.5	106.8	114.8	112.8	127.5	130.5	162.9

<sup>1</sup> Index numbers in this table have been recompiled to reflect the change to a quarterly collection basis from June 1997.  
(Source: *Price Index of Materials Used in Other than House Building*, ABS catalogue number 6407.0.)

*continued*



Year or month	Dairy products <sup>1</sup>			Staff-hours worked	
	Whole milk <sup>2</sup>	Factory butter <sup>3</sup>	Factory cheese	Textile manufacturing <sup>4</sup>	Vegetable preserving
	million litres	tonnes	tonnes	'000	'000
1994-95	436.5	8 105	20 529	1 527	1 838
1995-96	513.8	9 589	24 852	1 443	1 784
1996-97	529.4	10 869	25 398	1 349	1 534
<b>1994</b>					
December	61.6	963	3 735	111	181
<b>1996</b>					
December	70.9	1 166	3 872	104	124
<b>1997</b>					
October	82.0	1 348	3 896	110	80
November	81.4	1 185	3 733	91	n.y.a.
December	74.4	1 111	3 425	79	n.y.a.
Year or month	Newsprint <sup>5</sup>	Refined zinc	Metal. refin. index <sup>6</sup>	Electricity	
	'000 tonnes	'000 tonnes		million kW.h	
1994-95	222.7	189.8	98.3	8 688	
1995-96	242.9	207.8	104.7	9 100	
1996-97	232.7	207.7	116.1	9 543	
<b>1994</b>					
December	16.7	15.2	98.6	664	
<b>1996</b>					
December	18.2	17.6	120.7	760	
<b>1997</b>					
October	n.y.a.	17.8	118.4	n.y.a.	
November	n.y.a.	15.7	117.4	n.y.a.	
December	n.y.a.	18.0	123.1	n.y.a.	

<sup>1</sup> Source: Australian Dairy Corporation.

<sup>2</sup> Includes the whole milk equivalent of farm cream intake.

<sup>3</sup> Includes butter equivalent of butter oil.

<sup>4</sup> Includes spinning, weaving and carpet making. Reported by establishments which manufacture textiles only, or manufacture clothing and textiles in the one plant.

<sup>5</sup> Excludes production of directory newsprint and high grade specialty paper.

<sup>6</sup> Metallurgical refining index (Base: 1979-80 = 100.0) Output from selected establishments covering the smelting and refining of ferro-alloys, zinc and aluminium. The weighting pattern is based on the establishments' value added as derived from the 1979-80 Manufacturing Census. For multi-product establishments, value added was apportioned to products on the basis of gross receipts from each product.

(Source: ABS unpublished data.)

## 20

LIVESTOCK SLAUGHTERING: **Original**

Year or month	Cattle					
	Bulls, bullocks and steers	Cows and heifers	Calves	Sheep	Lambs	Pigs
	'000	'000	'000	'000	'000	'000
1994-95	111.2	96.7	28.8	569.3	477.2	92.9
1995-96	95.4	88.9	41.4	349.7	393.3	86.5
1996-97	r 110.2	r 93.4	r 43.6	r 384.4	r 364.0	r 74.9
<b>1996</b>						
February	8.3	8.1	0.1	34.9	38.5	6.7
<b>1997</b>						
February	10.6	8.4	0.1	46.3	34.8	5.9
March	10.1	7.7	0.4	42.4	34.1	6.2
April	10.3	10.6	1.6	46.5	34.4	6.5
May	9.7	12.3	1.7	35.9	41.8	7.5
June	7.5	10.3	0.9	31.0	29.9	5.9
July	8.6	9.5	1.9	30.6	35.9	7.7
August	7.2	6.4	14.7	22.5	22.0	5.7
September	5.3	4.9	20.4	18.0	23.1	5.4
October	6.7	9.4	9.4	32.9	32.3	6.8
November	7.3	9.7	1.2	39.5	31.1	5.7
December	r 9.1	r 10.1	r 0.2	r 57.1	r 31.3	7.5
<b>1998</b>						
January	r 9.2	13.3	r 0.1	r 56.5	r 43.9	6.9
February	p 8.1	p 10.4	p 0.2	p 56.2	p 33.0	p 5.6

(Source: *Livestock Products, Australia*, ABS catalogue number 7215.0.)

## 21

LIVESTOCK SLAUGHTERING: **Seasonally adjusted and trend**

Month	Seasonally adjusted			Trend		
	Cattle and calves	Sheep and lambs	Pigs	Cattle and calves	Sheep and lambs	Pigs
	'000	'000	'000	'000	'000	'000
<b>1996</b>						
February	18.4	58.9	7.0	18.8	61.8	7.2
<b>1997</b>						
February	22.2	69.9	6.6	22.1	67.1	6.4
March	21.7	63.1	6.3	22.6	68.0	6.6
April	24.7	73.9	6.6	23.0	68.2	6.6
May	23.1	66.3	6.7	23.1	68.3	6.5
June	21.6	59.4	5.9	23.2	r 68.9	6.4
July	24.0	76.3	7.0	r 23.1	r 70.0	6.3
August	25.2	79.7	6.1	r 23.0	r 71.5	6.3
September	19.4	60.5	5.8	r 22.9	r 73.1	6.3
October	24.7	81.8	7.0	r 23.1	r 74.6	6.4
November	24.4	72.7	6.0	r 23.5	r 75.8	6.5
December	r 20.8	r 77.6	6.4	r 23.9	r 76.7	6.6
<b>1998</b>						
January	r 26.7	r 80.4	7.4	r 24.4	r 77.4	r 6.6
February	25.4	76.2	6.3	25.0	78.3	6.7

(Source: ABS unpublished data)

## 22 MEAT PRODUCTION<sup>1</sup>: Original

Year or month	Beef tonnes	Veal tonnes	Mutton tonnes	Lamb tonnes	Pigmeat <sup>2</sup> tonnes	Total tonnes
1994-95	49 907	977	11 230	8 412	5 982	76 509
1995-96	45 377	875	7 414	7 407	5 634	66 707
1996-97	r 51 723	r 907	r 8 170	r 6 876	r 4 934	r 72 610
<b>1996</b>						
February	4 163	5	747	726	436	6 078
<b>1997</b>						
February	4 912	5	995	656	393	6 960
March	4 572	11	902	645	412	6 541
April	5 331	37	989	650	425	7 431
May	5 461	39	749	791	496	7 536
June	4 416	21	644	564	389	6 034
July	4 467	42	639	677	437	6 262
August	3 550	302	452	415	362	5 081
September	2 478	412	365	436	345	4 037
October	4 113	192	675	612	430	6 022
November	4 251	51	820	578	362	6 062
December	r 4 890	r 7	r 1 169	r 583	447	r 7 096
<b>1998</b>						
January	r 5 115	r 6	r 1 158	r 831	436	r 547
February	p 4 693	p 7	p 1 115	p 619	p 351	p 6 786

<sup>1</sup> Carcass weight.

<sup>2</sup> Includes pork used for production of bacon and ham.

(Source: *Livestock Products, Australia*, ABS catalogue number 7215.0.)

## 23 PRINCIPAL MINERAL CONCENTRATES PRODUCED: Original

Year or quarter	Copper	Iron (pellets)	Lead	Lead- zinc	Tin	Zinc
Year or quarter	'000 tonnes	'000 tonnes	'000 tonnes	'000 tonnes	'000 tonnes	'000 tonnes
1994-95	59.4	1 483.8	97.4	45.3	14.3	350.6
1995-96	53.5	1 681.3	106.3	38.6	16.0	361.5
1996-97	99.7	809.4	101.4	38.0	16.3	356.9
<b>1995</b>						
September	4.5	463.0	28.4	11.2	4.1	93.6
December	r 7.8	416.0	29.7	6.8	4.1	98.1
<b>1996</b>						
March	19.8	326.9	24.1	11.4	3.5	84.8
June	21.5	475.4	24.1	9.2	4.3	85.0
September	26.0	439.3	30.6	10.3	3.9	88.6
December	25.6	366.7	24.9	11.0	4.0	89.5
<b>1997</b>						
March	24.0	3.3	22.9	10.2	3.9	85.6
June	24.2	—	23.0	6.4	4.6	93.3
September	27.2	—	22.5	5.4	4.8	88.6

(Source: Tasmania—Development and Resources)

## 24

SAWMILLS AND PLYWOOD MILLS, LOGS DELIVERED AND TIMBER PRODUCED: **Original**

Year or quarter	Tasmanian-grown logs delivered					Sawn, peeled and sliced timber produced <sup>1</sup>				
	Eucalypts	Hardwoods, excluding eucalypts <sup>2</sup>	Plantation <sup>3</sup> softwoods	Native softwoods <sup>4</sup>	Total	Eucalypts	Hardwoods, excluding eucalypts <sup>2</sup>	Plantation <sup>3</sup> softwoods	Native softwoods <sup>4</sup>	Total
		'000 m <sup>3</sup>	'000 m <sup>3</sup>	'000 m <sup>3</sup>			'000 m <sup>3</sup>	'000 m <sup>3</sup>	'000 m <sup>3</sup>	
1994-95	653.1	12.6	304.9	2.8	973.4	212.5	4.3	142.7	0.6	360.1
1995-96	602.8	13.0	343.7	1.4	960.9	192.4	4.4	152.0	0.5	349.3
1996-97	500.8	17.0	352.9	1.2	871.9	165.8	4.3	158.0	0.5	328.5
<b>1995</b>										
December	139.1	1.5	70.2	0.2	211.0	49.0	1.0	36.0	0.2	86.2
<b>1996</b>										
March	136.6	6.7	98.1	0.3	241.7	41.5	0.9	41.2	0.1	83.7
June	142.9	3.0	95.5	0.6	242.0	46.5	1.2	38.8	0.1	86.6
September	135.5	2.5	96.1	—	234.2	47.3	1.1	42.3	0.1	90.8
December	112.7	3.9	82.3	0.5	199.4	40.1	0.9	40.6	0.1	81.8
<b>1997</b>										
March	108.7	6.6	85.0	0.4	200.8	34.0	1.0	36.6	—	71.6
June	143.9	3.9	89.4	0.3	237.5	44.5	1.2	38.4	0.2	84.3
September	139.5	2.7	98.3	0.3	240.9	52.4	1.5	42.3	0.1	96.3
December	123.4	3.1	73.4	0.2	200.2	45.3	1.0	41.2	0.1	87.6

<sup>1</sup> Includes plywood, veneer and sliced timber production converted to an equivalent cubic measurement.

<sup>2</sup> Includes blackwood, myrtle, sassafras etc.

<sup>3</sup> Radiata pine.

<sup>4</sup> Includes Huon pine, celery top pine and King William pine.

(Source: ABS unpublished data.)

## 25

CHIPPING AND GRINDING OF WOOD<sup>1</sup>: **Original**

Year or quarter	Producing locations <sup>2</sup>	Materials used <sup>3</sup>		
		Logs delivered <sup>4</sup>	Sawmill offcuts	Chipped and ground wood production
		'000 m <sup>3</sup>	'000 m <sup>3</sup>	('000 tonnes green weight)
1994-95	31	4 064.1	394.2	4 343.1
1995-96	31	3 510.0	457.9	3 820.1
1996-97	27	3 207.4	433.2	3 609.3
<b>1995</b>				
December	31	932.1	104.6	939.9
<b>1996</b>				
March	32	842.6	109.8	958.0
June	31	799.6	125.3	878.1
September	30	767.5	133.5	870.9
December	30	805.1	117.5	908.4
<b>1997</b>				
March	28	759.7	87.0	829.2
June	27	875.1	95.2	1 000.9
September	27	936.1	112.8	1 064.1
December	28	999.2	113.6	1 100.1

<sup>1</sup> Both hardwoods and softwoods, separate details are not available.

<sup>2</sup> Capable of producing at end of year or actually producing during quarter.

<sup>3</sup> Data reported by weight, converted to cubic measure by the factor 0.95 m<sup>3</sup> per tonne.

<sup>4</sup> Includes log equivalent of limbwood and billets.

(Source: ABS unpublished data.)

## 26

LOGS DELIVERED FOR MILLING OR CHIPPING: **Original**

Year or quarter	Sawmilling and plywood milling			Chipping and grinding <sup>1</sup>			Total		
	Crown land <sup>2</sup>	Private land	Total	Crown land <sup>2</sup>	Private land	Total	Crown land <sup>2</sup>	Private land	Total
	'000 m <sup>3</sup>	'000 m <sup>3</sup>	'000 m <sup>3</sup>	'000 m <sup>3</sup>	'000 m <sup>3</sup>	'000 m <sup>3</sup>	'000 m <sup>3</sup>	'000 m <sup>3</sup>	'000 m <sup>3</sup>
1994-95	780.3	193.2	973.4	1 966.8	2 097.3	4 064.1	2 747.1	2 290.4	5 037.6
1995-96	773.5	187.4	960.9	1 579.6	1 930.4	3 510.0	2 353.1	2 117.8	4 470.9
1996-97	725.6	146.4	871.9	1 627.4	1 580.0	3 207.4	2 353.0	1 726.3	4 079.3
<b>1995</b>									
December	165.2	45.8	211.0	388.3	543.8	932.1	553.5	589.6	1 143.1
<b>1996</b>									
March	202.3	39.4	241.7	405.3	437.3	842.6	607.6	476.7	1 084.3
June	191.9	50.1	242.0	347.9	451.8	799.6	539.7	501.8	1 041.6
September	194.3	39.9	234.2	403.5	364.0	767.5	597.8	403.9	1 001.7
December	162.5	36.9	199.4	411.0	394.1	805.1	573.5	430.9	1 004.5
<b>1997</b>									
March	170.3	30.5	200.8	375.7	383.9	759.7	546.0	414.5	960.5
June	198.5	39.1	237.5	437.2	437.9	875.1	635.7	477.0	1 112.6
September	201.0	39.8	240.9	464.9	471.2	936.1	665.9	511.0	1 177.0
December	166.6	33.6	200.2	485.0	514.3	999.2	651.5	547.9	1 199.4

<sup>1</sup> Logs used are generally below sawmilling standard; includes log equivalent of limbwood and billets.

<sup>2</sup> Comprises all areas (including concession areas) from which royalties are payable to Forestry Tasmania.  
(Source: ABS unpublished data.)

## 27

## BUILDING APPROVALS: Original

Year or month	New residential building			Value					
	Houses no.	Other <sup>1</sup> no.	Con- versions etc. no.	Total dwelling units no.	New dwelling units \$'000	Alterations and additions <sup>2</sup> to residential building \$'000	Non-residential building <sup>3</sup>		Total of all building \$'000
							Private \$'000	Total \$'000	
1994-95	2 576	596	14	3 176	244 623	39 963	117 984	161 567	446 152
1995-96	1 938	601	7	2 546	217 445	36 890	119 849	216 752	471 086
1996-97	1 593	251	17	1 861	157 428	35 323	121 490	158 970	351 720
<b>1996</b>									
February	172	25	—	197	16 763	3 839	7 054	13 327	33 929
<b>1997</b>									
February	129	24	—	153	13 702	3 253	8 862	12 507	29 461
March	125	—	—	125	10 922	3 719	7 861	10 140	24 781
April	144	51	1	196	16 900	3 165	4 758	5 454	25 520
May	121	25	1	147	12 768	2 723	16 913	18 091	33 582
June	104	13	1	118	9 464	2 523	13 294	13 619	25 606
July	109	56	—	165	14 289	3 695	5 761	7 807	25 790
August	121	14	1	136	10 987	3 481	4 944	6 444	20 913
September	131	18	—	149	13 803	2 845	3 806	13 474	30 122
October	128	35	—	163	13 878	3 413	8 584	10 722	28 014
November	120	8	—	128	11 098	2 816	3 459	7 341	21 255
December	130	24	1	155	13 535	2 740	10 958	12 655	28 931
<b>1998</b>									
January	123	10	—	133	11 690	3 138	9 993	13 066	27 894
February	115	6	—	121	10 055	3 092	2 692	6 178	19 325

<sup>1</sup> New individual dwelling units (e.g. flats, home units and villa units).

<sup>2</sup> Valued at \$10,000 and over.

<sup>3</sup> Comprises non-residential building (new plus alterations and additions) valued at \$50,000 and over.

(Source: *Building Approvals, Tasmania*, ABS catalogue number 8731.6.)

## 28

SECURED HOUSING COMMITMENTS<sup>1</sup>: Original, seasonally adjusted and trend

Month	Total number of dwellings <sup>2</sup>			Total value of commitments <sup>3</sup>		
	Original	Seasonally adjusted	Trend	Original	Seasonally adjusted	Trend
	no.	no.	no.	\$m	\$m	\$m
<b>1996</b>						
February	911	887	904	63.3	62.7	61.6
<b>1997</b>						
February	778	809	830	56.1	57.6	57.1
March	814	815	819	59.2	58.8	56.9
April	933	874	814	64.0	59.7	57.4
May	943	865	809	63.6	58.1	58.1
June	756	724	799	54.6	56.6	58.4
July	786	774	791	57.7	57.3	58.7
August	801	792	r 788	60.7	59.8	59.1
September	796	808	795	62.8	63.2	59.9
October	845	834	r 808	60.8	59.6	r 60.9
November	756	776	r 822	56.6	57.8	r 61.9
December	816	874	r 834	64.3	67.5	r 63.1
<b>1998</b>						
January	683	804	844	52.4	60.9	64.2
February	851	886	853	66.6	68.4	65.2

<sup>1</sup> New seasonal adjustment factors resulting from the annual seasonal reanalysis were introduced in the January 1998 issue.

<sup>2</sup> Includes new dwellings, established dwellings and refinancing. Excludes alterations and additions.

<sup>3</sup> Commitment is a firm offer of housing finance. It either has been, or is normally expected to be, accepted. Includes commitments to provide housing finance to employees and commitments accepted and cancelled in the same month. Excludes alterations and additions. Includes refinancing.

(Source: *Housing Finance for Owner Occupation, Australia*, ABS catalogue 5609.0.)



## 29

BANKING STATISTICS<sup>1</sup>: Original

Month	Deposits				
	Current bearing interest	Current – not bearing interest	Fixed	Investment savings accounts	Statement savings accounts
	\$m	\$m	\$m	\$m	\$m
<b>1997</b>					
February	695	241	1 764	605	229
March	692	252	1 780	606	231
April	687	250	1 791	600	231
May	695	249	1 760	600	230
June	685	249	1 750	600	219
July	710	242	1 750	602	220
August	712	239	1 751	608	227
September	714	236	1 706	608	232
October	736	234	1 679	608	234
November	740	237	1 656	605	231
December	771	251	1 690	611	238
<b>1998</b>					
January	775	250	1 685	620	237
February	758	246	1 709	623	235

Month	Deposits			
	Passbook/School savings accounts	Other	Total	Loans <sup>2</sup>
	\$m	\$m	\$m	\$m
<b>1997</b>				
February	123	103	3 759	4 493
March	122	103	3 786	4 694
April	121	102	3 781	4 412
May	119	101	3 754	4 423
June	117	100	3 719	4 500
July	114	94	3 733	4 559
August	114	98	3 748	4 590
September	112	95	3 704	4 547
October	110	95	3 696	4 530
November	107	99	3 675	4 541
December	102	95	3 758	4 630
<b>1998</b>				
January	100	95	3 743	5 741
February	98	95	3 764	4 745

<sup>1</sup> Details are the averages of weekly figures for each month. The figures are derived from returns submitted by banks authorised under the *Banking Act* together with similar returns voluntarily submitted by the State banks; they exclude the Reserve Bank.

<sup>2</sup> Excludes non-resident loans.

(Source: Reserve Bank of Australia.)

## 30

PRIVATE NEW CAPITAL EXPENDITURE BY TYPE OF ASSET<sup>1, 2</sup>: Original

Year or quarter	New buildings and structures	Equipment, plant, and machinery	Total
	\$m	\$m	\$m
	1994–95	143	546
1995–96	190	423	613
1996–97	128	559	687
<b>1997</b>			
March	30	140	169
June	30	144	175
September	37	136	174
December	57	129	186

<sup>1</sup> Estimates based on a sample survey and therefore subject to sampling variability. Covers selected industries only—mining, manufacturing, finance, property and other selected industries.

<sup>2</sup> Data revised back to June quarter 1987. See *Improvements to ABS Economic Statistics* (catalogue number 1357.0).

(Source: *State Estimates of Private New Capital Expenditure*, ABS catalogue number 5646.0.)

## 31

PASSENGER ARRIVALS AND DEPARTURES, TASMANIA<sup>1</sup>: Original

Period	Arrivals				Departures Total	Cruise ships	
	By air— interstate	By air— international	By sea	Total		Arrivals	Departures
1993	694 244	5 144	115 381	814 769	814 835	2 033	2 033
1994	745 508	4 166	128 644	878 318	880 936	6 592	6 592
1995	811 784	3 982	116 869	932 635	931 278	6 199	6 199
1996	831 040	2 999	115 486	949 525	961 468	5 286	5 286
1997 p	796 870	2 238	139 446	938 554	963 533	4 600	4 600
<b>1997</b>							
February p	69 018	383	11 718	81 119	76 323	2 350	2 350
March p	72 393	441	12 952	85 786	92 811	—	—
April p	66 932	331	11 820	79 083	86 079	—	—
May p	55 569	—	8 680	64 249	76 312	—	—
June p	58 491	—	10 223	68 714	67 235	—	—
July p	53 633	—	6 512	60 145	67 778	—	—
August p	57 543	—	10 346	67 889	70 256	—	—
September p	70 562	—	13 566	84 128	79 173	—	—
October p	69 626	—	12 548	82 174	80 690	—	—
November p	66 037	391	10 563	76 991	75 593	120	120
December p	80 676	293	16 222	97 191	80 165	—	—
<b>1998</b>							
January p	81 910	369	14 430	96 709	115 230	2 730	2 730
February p	73 432	401	15 909	89 742	84 795	6 634	6 634

<sup>1</sup> The following persons are not included in these statistics: passengers under three years of age accompanied by an adult; passengers travelling on chartered flights with minor carriers; passengers travelling on private or VIP flights; and passengers from or departing for overseas other than direct flights to New Zealand.

(Source: Tourism Tasmania.)

## 32

## TOTAL PASSENGER ARRIVALS BY AIR AND SEA, TASMANIA: Original, seasonally adjusted and trend

Period	Original	Seasonally adjusted <sup>1</sup>	Trend <sup>2</sup>
<b>1997</b>			
February p	81 119	76 488	76 431
March p	85 786	72 875	77 349
April p	79 083	84 263	78 473
May p	64 249	80 288	79 615
June p	68 714	80 569	80 370
July p	60 145	74 822	80 534
August p	67 889	86 108	80 158
September p	84 128	77 187	79 607
October p	82 174	82 924	79 339
November p	76 991	75 518	79 406
December p	97 191	78 042	79 723
<b>1998</b>			
January p	96 709	80 357	80 369
February p	89 742	84 763	80 755

<sup>1</sup> There is an annual recalculation of seasonal adjustment factors to include the most recent year's arrivals. This occurs at the end of each financial year and may cause revisions to previously published seasonally adjusted and trend figures. A full time series of seasonally adjusted and trend series from January 1971 is available on request, telephone (03) 6222 5912.

<sup>2</sup> Trend estimates for the most recent months have been revised, see Explanatory Notes.  
(Source: Tourism Tasmania. ABS unpublished data)

HOTELS, MOTELS, ETC. WITH FACILITIES						
Period	Original		Room nights		Original	
	Establishments <sup>1</sup> no.	Guest rooms <sup>1</sup> no.	Seasonally adjusted <sup>2</sup> no.	Trend estimates <sup>2</sup> no.	Room occupancy rate %	Takings from accommodation \$'000
<b>December quarter</b>						
1995	180	5 503	n.a.	n.a.	57.0	22 090
1996	187	5 604			54.8	22 556
1997	213	5 921			53.2	23 993
<b>1995</b>						
October	n.a.	n.a.	88 939	91 008	55.9	7 269
November	n.a.	n.a.	91 897	90 909	63.4	7 850
December	180	5 503	91 259	90 743	52.1	6 971
<b>1996</b>						
October	n.a.	n.a.	89 691	87 436	55.0	7 577
November	n.a.	n.a.	90 116	87 283	60.0	7 916
December	187	5 604	86 558	86 898	49.2	7 063
<b>1997</b>						
October	n.a.	n.a.	92 052	91 193	53.2	8 053
November	n.a.	n.a.	87 820	92 000	56.1	8 073
December	213	5 921	94 404	92 472	50.4	7 867
HOLIDAY UNITS						
Period	Original		Unit nights		Original	
	Establishments <sup>1</sup> no.	Units <sup>1</sup> no.	Seasonally adjusted <sup>2</sup> no.	Trend estimates <sup>2</sup> no.	Unit occupancy rate %	Takings from accommodation \$'000
<b>December quarter</b>						
1995	54	830	n.a.	n.a.	52.8	2 958
1996	57	861			52.9	2 990
1997	62	944			50.6	3 238
<b>1995</b>						
October	n.a.	n.a.	12 289	12 752	50.7	928
November	n.a.	n.a.	13 180	12 824	56.4	1 011
December	54	830	13 263	12 813	51.5	1 019
<b>1996</b>						
October	n.a.	n.a.	13 076	12 909	52.0	953
November	n.a.	n.a.	13 557	13 141	56.2	1 020
December	57	861	13 546	13 301	50.7	1 017
<b>1997</b>						
October	n.a.	n.a.	14 146	13 982	51.2	1 076
November	n.a.	n.a.	13 810	14 117	52.4	1 045
December	62	944	14 086	14 220	48.1	1 116
CARAVAN PARKS						
Period	Original		Site nights		Original	
	Establishments <sup>1</sup> no.	Sites and cabins <sup>1</sup> no.	Seasonally adjusted <sup>2</sup> no.	Trend estimates <sup>2</sup> no.	Site occupancy rate %	Takings from accommodation \$'000
<b>December quarter</b>						
1995	72	6 440	n.a.	n.a.	33.2	1 923
1996	73	6 500			33.1	1 983
1997	73	6 477			34.1	2 138
<b>1995</b>						
October	n.a.	n.a.	64 892	65 168	30.0	583
November	n.a.	n.a.	64 947	65 652	32.4	616
December	72	6 440	66 968	66 034	37.2	724
<b>1996</b>						
October	n.a.	n.a.	66 305	66 643	30.8	596
November	n.a.	n.a.	67 052	66 418	32.3	644
December	73	6 500	66 118	66 635	36.2	742
<b>1997</b>						
October	n.a.	n.a.	66 093	68 783	31.6	623
November	n.a.	n.a.	69 184	68 610	33.3	672
December	73	6 477	67 974	68 432	37.4	844

<sup>1</sup> At end of quarter. <sup>2</sup> Seasonally adjusted and trend estimates are revised annually because of yearly seasonal reanalysis.  
(Source: *Tourist Accommodation, Tasmania*, ABS catalogue number 8635.6.)

## 34 REGISTRATIONS OF NEW MOTOR VEHICLES<sup>1</sup>: Original

Year or month	Passenger vehicles	Other vehicles <sup>2</sup>	Total (excl. motor cycles)	Vehicles registered by vehicle rental businesses <sup>3</sup>	Motor cycles
	no.	no.	no.	no.	no.
1995	10 919	2 874	13 793	1 952	393
1996	11 445	2 726	14 171	2 384	462
1997	12 512	2 606	15 118	2 458	518
<b>1996</b>					
January	670	203	873	5	36
<b>1997</b>					
January	756	179	935	4	49
February	746	152	898	3	34
March	738	220	958	3	39
April	815	232	1 047	1	46
May	941	270	1 211	6	36
June	861	267	1 128	22	28
July	1 217	259	1 476	366	46
August	1 094	220	1 314	270	44
September	1 339	164	1 503	547	44
October	1 197	190	1 387	252	44
November	916	192	1 108	119	40
December	1 892	261	2 153	865	68
<b>1998</b>					
January p	752	173	925	12	40

<sup>1</sup> Includes State and Commonwealth Government-owned motor vehicles other than those belonging to the defence services. Excludes tractors, plant and equipment, caravans and trailers.

<sup>2</sup> Comprises utilities, panel vans, rigid and articulated trucks and other truck-type vehicles (i.e. motor vehicles designed for purposes other than freight carrying, e.g. campervans, tow trucks, ambulances and hearses) and buses.

<sup>3</sup> These figures are included in previous columns.

(Source: *Motor Vehicle Registrations Australia*, ABS catalogue number 9301.0. ABS unpublished data.)

## 35 TURNOVER OF RETAIL ESTABLISHMENTS AT CURRENT PRICES<sup>1, 2</sup>: Original and trend

Period	Original \$m	Trend estimates <sup>3</sup>	
		\$m	Change from corresponding month of previous year %
<b>1996</b>			
February	243.7	256.3	4.9
<b>1997</b>			
February	233.8	258.8	1.0
March	252.1	259.3	1.1
April	254.6	260.2	1.5
May	263.7	261.7	2.4
June	244.1	264.1	3.7
July	259.4	267.2	5.2
August	255.3	270.3	6.5
September	255.8	272.3	7.2
October	278.1	272.7	6.9
November	283.9	271.7	6.0
December	349.8	270.1	4.9
<b>1998</b>			
January	260.4	268.3	3.9
February	245.1	266.6	3.0

<sup>1</sup> Survey has been re-designed—see Information Paper (8511.0).

<sup>2</sup> Data revised back to 1982. See *Improvements to ABS Economic Statistics* (Catalogue number 1357.0).

<sup>3</sup> Trend estimates for the most recent months have been revised. See Explanatory Notes..

(Source: *Retail Trade, Australia*, ABS Catalogue number 8501.0)

	NSW	Vic.	Qld	SA	WA	Tas.	Aust. <sup>1</sup>
<b>Population</b>							
Estimated resident population, September 1997 ('000) p	6 293.0	4 617.4	3 417.4	1 481.6	1 805.4	<b>472.7</b>	18 588.6
Proportion of Australian population, September 1997 (%) p	33.9	24.8	18.4	8.0	9.7	<b>2.5</b>	100.0
Population growth rate, 12 months to September 1997 (%) p	1.2	1.0	1.8	0.4	1.8	<b>-0.4</b>	1.2
<b>Labour Force</b>							
Employment growth, 12 months to March 1998 (trend series) (%)							
Males	0.7	1.6	4.1	-0.6	2.2	<b>-0.8</b>	1.7
Females	0.4	1.6	4.0	-4.2	2.5	<b>2.4</b>	1.3
Persons	0.6	1.6	4.1	-2.2	2.3	<b>-0.6</b>	1.5
Unemployment rate (trend series), March 1998 (%)	7.5	8.3	8.6	10.0	7.1	<b>10.8</b>	8.1
Unemployment growth, 12 months to March 1998 (trend series) (%)	-6.8	-7.7	-8.9	3.0	-2.5	<b>0.9</b>	-6.0
Participation rate (trend series), March 1998 (%)	61.4	63.4	64.9	60.5	65.9	<b>59.5</b>	63.1
Average weekly overtime worked per employee, February 1998 (hours)	1.0	1.1	0.8	0.9	1.3	<b>0.7</b>	1.0
Job vacancy rate, February 1998 (%)	1.0	1.2	1.1	0.6	<b>1.1</b>	<b>0.4</b>	1.1
Working days lost through industrial disputes, 12 months to December 1997 (days per '000 employees)	64	115	71	15	85	<b>35</b>	74
<b>Wages and Prices</b>							
Average weekly total earnings, full-time adult employees (trend series) November 1997 (\$)							
Males	846.7	812.2	770.7	748.1	839.8	<b>762.9</b>	815.1
Females	673.8	653.5	618.3	604.1	616.6	<b>600.2</b>	649.7
Persons	779.9	755.6	713.3	698.5	755.1	<b>707.5</b>	753.2
Average weekly total earnings, full-time adult employees, growth rate (trend series), 12 months to November 1997 (%)	2.8	4.5	5.0	2.1	3.3	<b>4.8</b>	3.6
Consumer price index, all groups, annual growth to December quarter 1997 (%) <sup>2</sup>	-0.2	-0.1	0.5	-1.1	-0.7	-0.1	-0.2
<b>Building</b>							
% change in the number of new residential dwelling units approved in 12 months ended February 1998, over the same period previous year	13.5	29.4	8.4	21.8	10.5	<b>-15.6</b>	14.3
<b>Private Investment and Retail Trade</b>							
% change in private new capital expenditure, 12 months ended December 1997, over the same period previous year	4.8	1.6	15.5	26.5	3.8	<b>6.8</b>	4.7
% change in trend estimates turnover of retail establishments, February 1998 (change from corresponding month of the previous year)	4.1	2.2	7.4	7.8	1.7	<b>3.0</b>	4.3
<b>Transport</b>							
% change in number of new motor vehicles (excluding motorcycles) registered 12 months ended January 1998, over the same period previous year	10.1	13.4	10.0	11.7	9.3	<b>6.1</b>	11.2
<b>Agriculture</b>							
% change in the number of livestock slaughtered 12 months ended February 1998 over the same period previous year							
Cattle and calves	8.4	12.8	25.3	9.0	4.9	<b>13.6</b>	14.5
Sheep and lambs	2.8	11.6	12.2	10.7	3.8	<b>19.4</b>	6.6
<b>Tourism</b>							
Room occupancy rates for hotels, motels etc. with facilities, December quarter 1997(%)	59.0	56.1	59.5	58.3	58.7	<b>53.2</b>	58.2
<b>Australian National and State Accounts</b>							
% change in Domestic (State) Final Demand, <sup>3</sup> Average 1989-90 Prices							
Trend Series							
Sept. qtr 1997 to Dec. qtr 1997	1.4	—	1.4	1.2	2.1	<b>0.2</b>	1.2
Dec. qtr 1996 to Dec. qtr 1997	4.7	4.1	6.9	4.8	9.7	<b>1.2</b>	5.5

<sup>1</sup> Australian totals include the ACT and NT.<sup>2</sup> CPI applies to State capitals.<sup>3</sup> Total of four types of expenditure: Private investment, Private consumption, Government investment, Government consumption.

Particulars	Unit	Greater Hobart and Southern Statistical Division	Northern Statistical Division	Mersey-Lyell Statistical Division	Tasmania
<b>Area, 30 June 1996</b>	km <sup>2</sup>	25 521	19 935	22 507	67 964
<b>Population</b>					
Estimated resident population, 30 June 1996	no.	230 187	134 047	110 209	474 443
Estimated resident population, 30 June 1997 (p)	no.	230 113	133 710	109 678	473 501
Births 1996	no.	2 922	1 979	1 536	6 437
Deaths 1996	no.	1 871	1 114	879	3 864
<b>Labour Force</b> (original), December 1997					
Total employed	no.	93 100	54 300	48 000	195 400
Total unemployed	no.	10 500	8 800	8 500	27 900
Unemployment rate	%	10.2	13.9	15.1	12.5
Participation rate	%	60.4	60.3	60.5	60.4
<b>Schools, 1997<sup>1</sup></b>					
Government	no.	102	60	60	222
Non-government	no.	35	16	16	67
<b>Full-time school students, 1997<sup>1</sup></b>					
Government	no.	29 355	17 913	15 653	62 921
Non-government	no.	12 128	4 909	4 199	21 236
<b>Educational qualification, 1996 Census<sup>2</sup></b>					
Bachelor degree or higher	no.	17 058	7 152	3 908	28 184
Undergraduate diploma	no.	5 893	3 268	2 181	11 374
Associate diploma	no.	3 775	1 902	1 466	7 184
Skilled vocational	no.	16 255	10 040	8 841	35 238
Basic vocational	no.	4 548	2 632	2 305	9 515
<b>Agriculture</b>					
Establishments with agricultural activity,					
1996-97 season	no.	1 146	1 605	1 785	4 536
Total area of establishments	ha	723 377	867 132	329 439	1 919 948
Crops, production, 1996-97 season					
Potatoes	tonnes	4 890	105 493	205 264	315 646
Onions	tonnes	1 028	11 133	47 517	59 677
Apples	tonnes	42 829	4 695	8 125	55 649
Barley	tonnes	8 570	22 999	3 668	35 237
Livestock, 1996-97 season					
Beef cattle	no.	89 027	213 141	212 393	514 561
Dairy cattle	no.	6 313	77 887	126 437	210 637
Sheep and lambs	no.	1 779 992	2 014 236	182 361	3 976 589
Pigs	no.	2 299	17 313	4 240	23 852
Gross value of agric. production, 1995-96	\$m	137	217	277	631
<b>Tourist accommodation</b> —hotels, motels etc.					
Establishments, December quarter 1997	no.	89	68	56	213
Room occupancy rates, 1997	%	53.3	49.7	43.4	49.7
Takings, 1997	\$'000	43 670	22 889	17 706	84 265
<b>Business locations, September 1997</b>					
Locations with manufacturing activity					
Less than 20 employees	no.	396	314	235	945
20 or more employees	no.	68	65	42	175
Total	no.	464	379	277	1 120
Locations with retail activity					
Less than 20 employees	no.	2 012	1 303	1 135	4 450
20 or more employees	no.	76	39	35	150
Total	no.	2 088	1 342	1 170	4 600
<b>Building, 1996-97</b>					
New dwelling units approved	no.	939	526	379	1 844
Value of new residential building approved	\$'000	81 603	41 812	32 295	155 710
Value of all building approved	\$'000	164 600	101 014	86 105	351 721
<b>Dwellings, Census 1996<sup>2</sup></b>					
Total dwellings	no.	98 815	57 467	45 529	201 820
Occupied private dwellings	no.	85 255	49 759	40 183	175 197
Fully owned	no.	34 338	21 563	18 359	74 260

<sup>1</sup> Source: DEETYA and Tasmanian Department of Education, Community & Cultural Development.

<sup>2</sup> Total includes migratory statistical division.

<sup>3</sup> Includes Higher degree, Postgraduate diploma and Bachelor degree.

## EXPLANATORY NOTES

### INTRODUCTION

**1** This publication contains latest figures for a comprehensive range of economic indicators. Statistics shown in this publication are the latest available at the date of preparation and may be subject to revision in subsequent issues. In a number of cases figures appearing in this publication are preliminary and are subject to revision in subsequent issues. Reference should therefore always be made to the latest issue or to the statistical publication on the specific subject.

### SEASONAL ADJUSTMENT AND TREND ESTIMATION

**2** Seasonal adjustment is a means of removing the estimated effects of normal seasonal variation from the series so that the effects of other influences on the series can be more clearly recognised. Seasonal adjustment does not aim to remove the irregular or non-seasonal influences which may be present in any particular month. This means that month-to-month movements of the seasonally adjusted estimates may not be reliable indicators of trend behaviour.

**3** The smoothing of seasonally adjusted series reduces the impact of the irregular components of the seasonally adjusted series and creates trend estimates. These trend estimates are derived by applying a 13-term Henderson-weighted moving average to all months except the last six. The last six monthly trend estimates are obtained by applying surrogates of the Henderson average to the seasonally adjusted series. Trend series are used to analyse the underlying behaviour of the series over time.

**4** While this smoothing technique enables estimates to be produced for the latest month, it does result in revisions to the most recent months as additional observations become available. Generally, subsequent revisions become smaller and after 3 months have a negligible impact on the series. Revisions also occur as a result of the annual review of seasonal factors.

**5** Users may wish to refer to the ABS Publication *A Guide to Interpreting Time Series – Monitoring 'Trends' – An Overview* (1348.0) for more detailed information on smoothing seasonally adjusted time series data.

### RELATED PUBLICATIONS

**6** Current publications produced by the ABS are listed in the *Catalogue of Publications and Products* (1101.0). The ABS also issues, on Tuesdays and Fridays, the *Release Advice* (1105.0) which lists publications to be released in the next few days. The *Catalogue* and *Release Advice* are available from any ABS office.

### UNPUBLISHED STATISTICS

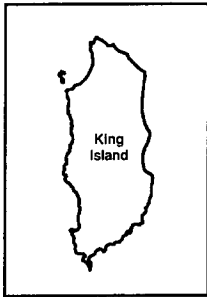
**7** As well as the statistics included in this and related publications, the ABS may have other relevant unpublished data available. Inquiries should be made to Information Inquiries on (03) 6222 5800 or to any ABS office.

### EFFECTS OF ROUNDING

**8** Some figures have been rounded and discrepancies may occur between totals and sums of the component items.

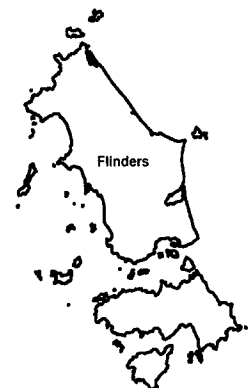
### SYMBOLS AND OTHER USAGES

n.a.	not available
n.y.a.	not yet available
..	not applicable
—	nil or rounded to zero
p	preliminary—figure or series subject to revision
r	figure or series revised since previous issue



# Tasmania

## Statistical Divisions



Statistical Division NORTHERN

Local Government Area Dorset









**FOR MORE INFORMATION . . .**

**SELF-HELP ACCESS TO STATISTICS**

- PHONE* Call 1900 986 400 for the latest statistics on CPI, Labour Force, Earnings, National Accounts, Balance of Payments and other topics. (Call cost is 75c per minute)
- INTERNET* <http://www.abs.gov.au>
- LIBRARY* A range of ABS publications is available from public and tertiary libraries Australia wide. Contact your nearest library to determine whether it has the ABS statistics you require.

**WHY NOT SUBSCRIBE?**

- PHONE* +61 1300 366 323
- FAX* +61 3 9615 7848

**CONTACTING THE ABS**

ABS provides a range of services, including: a telephone inquiry service; information consultancy tailored to your needs; survey, sample and questionnaire design; survey evaluation and methodological reviews; and statistical training.

<i>INQUIRIES</i>	<i>By phone</i>	<i>By fax</i>
Canberra	02 6252 6627	02 6253 1404
Sydney	02 9268 4611	02 9268 4668
Melbourne	03 9615 7755	03 9615 7798
Brisbane	07 3222 6351	07 3222 8283
Perth	08 9360 5140	08 9360 5955
Adelaide	08 8237 7400	08 8237 7566
Hobart	03 6222 5800	03 6222 5995
Darwin	08 8943 2111	08 8981 1218

*POST* Client Services, ABS, PO Box 10, Belconnen, ACT 2616

*EMAIL* [client.services@abs.gov.au](mailto:client.services@abs.gov.au)

ABS Catalogue no. 1303.6 **Tasmanian Statistical Indicators** May 1998



2130360005983  
ISSN 1034-1803

RRP \$18.00

